

LEA Name : Boyertown Area SD
Address : 911 Montgomery Ave
Boyertown , PA 19512

County : Berks
AUN Number : 114060753
LEA Type : SD

Annual Financial Report Accuracy Certification Statement

For Fiscal Year Ending
6/30/2019

Pennsylvania Department of Education

&

Office of Comptroller Operations

PDE-2056: Intermediate Unit
PDE-2057: School District, AVTS/CTC, Charter School,
and Special Program Jointure

CERTIFICATION: By signing this page I agree that the electronic data submitted is a complete and accurate statement of the financial operations and status of the local education agency for the fiscal year. It has been prepared in accordance with generally accepted accounting principles and established Commonwealth of PA reporting guidelines.



Chief School Administrator Signature



Board Secretary Signature

Date

12/9/19

Date

12/9/19

Carol Pitts

Contact Person

cpitts@boyertownasd.org

Contact Person E-mail Address

(610)369-7408

Ext :

Contact Person Telephone Number

Contact Person Fax Number

Audit Certification

Annual Financial Report:

For Fiscal Year Ending 6/30/2019

(Pursuant to PA School Code Section 218(b))

LEA Name : Boyertown Area SD
AUN Number : 114060753
County : Berks

Audit Certification Due:
12/31/2019

This certification is applicable to the Annual Financial Report data submitted through the Consolidated Financial Reporting System on: 12/9/19
Date

Auditing Firm:

Barbacane Thornton

CERTIFICATION: By signing this page I agree that the financial statements of the school have been properly audited as noted above pursuant to Article XXIV, and in the auditor's professional opinion, the Annual Financial Report (PDE-2057) submitted on the date referenced is materially consistent with the audited financial statements.

Chief School Administrator


Signature

12/17/19
Date

Carol Pitts

Contact Person

cpitts@boyertownasd.org

Contact Person E-mail Address

Board Secretary


Signature

12/16/19
Date

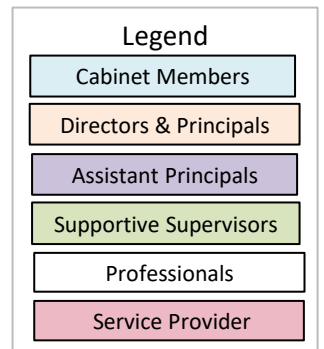
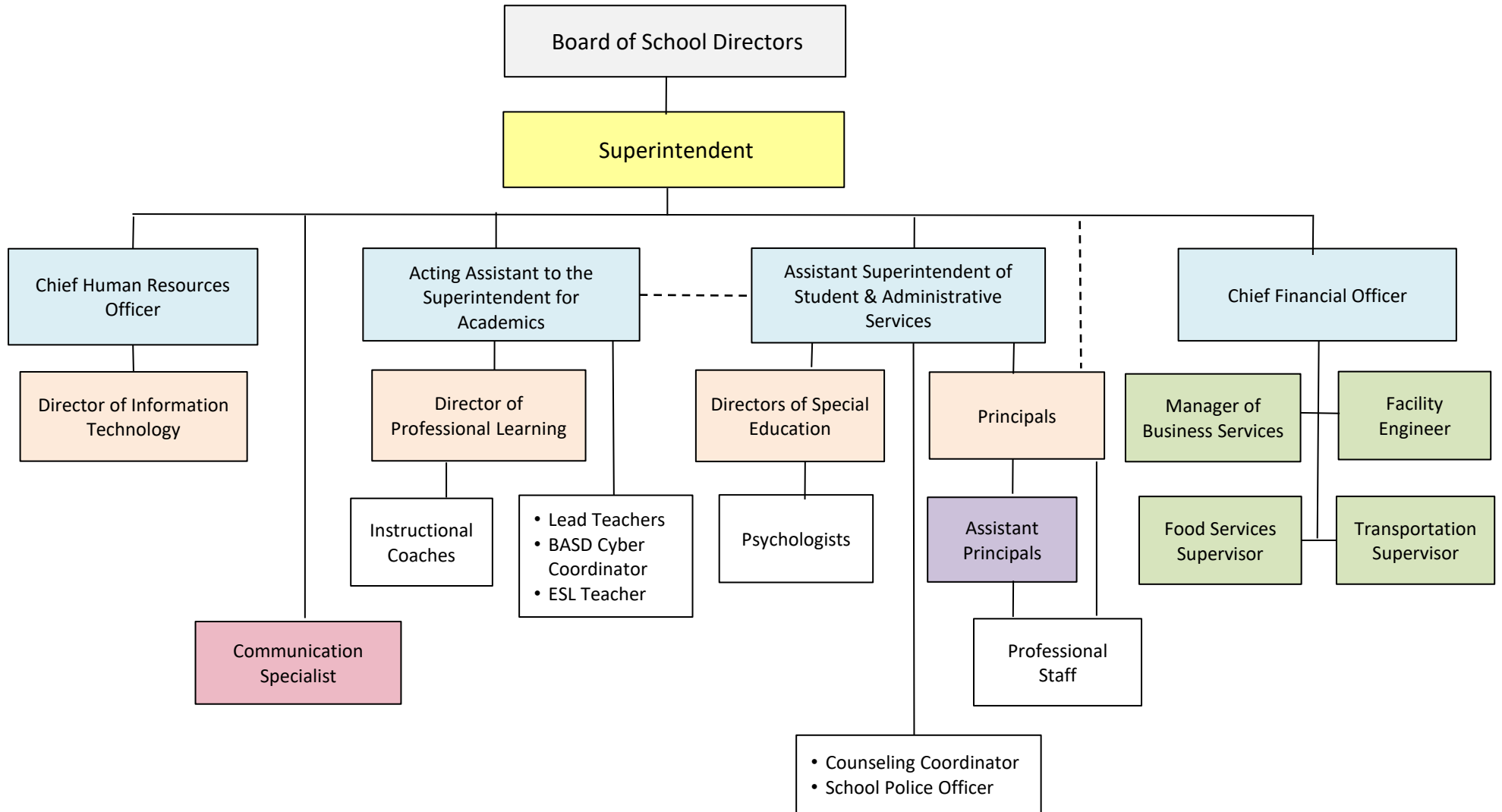
(610)369-7408

Ext :

Contact Person Telephone Number

Contact Person Fax Number

BASD Organizational Chart - Transition Year



Approved 9.25.18

<u>Val Number</u>	<u>Description</u>	<u>Justification</u>
16015	<p>REP Fund 51: Object 300 is greater than object 500. Purchased services for food service contracted services should be coded to objects 571 and 572. Correct or enter a justification.</p> <p>REP Fund 51 Object 300: \$18,960.00 REP Fund 51 Object 500: \$3,148.00</p>	<p>\$18,960 is purchased services for online payment systems fees.</p>
30390	<p>Revenue Detail: AFR amount must equal PDE FAI System amount.</p> <p>7110, AFR Rev Detail: \$15,019,054.03 7110, PDE FAI System: \$15,019,059.07</p>	<p>2014-15 BEF adjustment of \$5.04 from 8/30/18 subsidy payment was netted against Basic Education Subsidy.</p>
50160	<p>SOIN: All Governmental Fund General Obligation Bonds must include an amount for Interest Paid during Fiscal Year. Correct data or enter a justification.</p>	<p>GON 2019, issued March 2019, is a new bond issue with no interest payments in 2018-19.</p>
50450	<p>SESS - 2350 Legal and Accounting Services: SESS Schedule amounts for Special Education vary from prior year by 40% or more. Correct the data or enter a justification.</p> <p>SESS Schedule 2350: \$86,843.00 Prior Year SESS Schedule 2350: \$180,808.21</p>	<p>There were multiple due process hearings in 2017-18 which did not occur in 2018-19.</p>

Amounts Expressed in Whole Dollars	<u>General Fund</u> <u>(10)</u>	<u>Public Purpose Trust</u> <u>(27)</u>	<u>Other Compt Approved</u> <u>(28)</u>	<u>Athletic / Activity</u> <u>(29)</u>	<u>Capital Reserve (690.</u> <u>1850)</u> <u>(31)</u>
Assets And Deferred Outflows Of Resources					
Assets					
0100 Cash and Cash Equivalents	16,499,636				
0110 Investments	1,651,173				
0120 Taxes Receivable	2,988,160				
0130 Due From Other Funds	10,375				
0141 Due From Other Governments	157,445				
0142 State Revenue Receivable	5,303,998				
0143 Federal Revenue Receivable	813,352				
0145 Other Intergovernmental Revenue Receivable					
0146 Due from Primary Government					
0147 Due from Component Unit					
0150 Other Receivables	110,719				
0170 Inventories	21,496				
0180 Prepaid Expenses (Expenditures)	45,959				
0190 Other Current Assets					
Total Assets	\$27,602,313				
0910 Deferred Outflows of Resources					
Total Assets And Deferred Outflows Of Resources	\$27,602,313				

Amounts Expressed in Whole Dollars

	<u>Capital Reserve (1431)</u> <u>(32)</u>	<u>Other Capital Projects</u> <u>Fund</u> <u>(39)</u>	<u>Debt Service</u> <u>(40)</u>	<u>Permanent</u> <u>(90)</u>	<u>Total Governmental</u> <u>Funds</u>
Assets And Deferred Outflows Of Resources					
Assets					
0100 Cash and Cash Equivalents		10,536,920			27,036,556
0110 Investments		2,290,649			3,941,822
0120 Taxes Receivable					2,988,160
0130 Due From Other Funds		3,322,112			3,332,487
0141 Due From Other Governments					157,445
0142 State Revenue Receivable					5,303,998
0143 Federal Revenue Receivable					813,352
0145 Other Intergovernmental Revenue Receivable					
0146 Due from Primary Government					
0147 Due from Component Unit					
0150 Other Receivables					110,719
0170 Inventories					21,496
0180 Prepaid Expenses (Expenditures)		21,000			66,959
0190 Other Current Assets					
Total Assets		\$16,170,681			\$43,772,994
0910 Deferred Outflows of Resources					
Total Assets And Deferred Outflows Of Resources		\$16,170,681			\$43,772,994

Amounts Expressed in Whole Dollars

	<u>General Fund</u> <u>(10)</u>	<u>Public Purpose Trust</u> <u>(27)</u>	<u>Other Compt Approved</u> <u>(28)</u>	<u>Athletic / Activity</u> <u>(29)</u>	<u>Capital Reserve (690.</u> <u>1850)</u> <u>(31)</u>
Liabilities And Deferred Inflows Of Resources And Fund Balances					
Liabilities					
0400 Due to Other Funds	345,065				
0411 Due to Other Governments					
0412 Due to Primary Government					
0413 Due to Component Unit					
0420 Accounts Payable	1,152,600				
0430 Contracts Payable					
0440 Current Portion of Long-Term Debt					
0450 Short-Term Payables					
0461 Accrued Salaries and Benefits	3,986,243				
0462 Payroll Deductions and Withholding	8,003,825				
0480 Unearned Revenues					
0490 Other Current Liabilities	152,190				
Total Liabilities	\$13,639,923				
0950 Deferred Inflows of Resources	1,782,472				
Fund Balances					
0810 Nonspendable Fund Balance	67,455				
0820 Restricted Fund Balance					
0830 Committed Fund Balance	4,100,000				
0840 Assigned Fund Balance					
0850 Unassigned Fund Balance	8,012,463				
Total Fund Balances	\$12,179,918				
Total Liabilities, Deferred Inflows Of Resources And Fund Balances	\$27,602,313				

Amounts Expressed in Whole Dollars

	<u>Capital Reserve (1431)</u> <u>(32)</u>	<u>Other Capital Projects</u> <u>Fund</u> <u>(39)</u>	<u>Debt Service</u> <u>(40)</u>	<u>Permanent</u> <u>(90)</u>	<u>Total Governmental</u> <u>Funds</u>
Liabilities And Deferred Inflows Of Resources And Fund Balances					
Liabilities					
0400 Due to Other Funds		3,336,514			3,681,579
0411 Due to Other Governments					
0412 Due to Primary Government					
0413 Due to Component Unit					
0420 Accounts Payable		1,352,527			2,505,127
0430 Contracts Payable					
0440 Current Portion of Long-Term Debt					
0450 Short-Term Payables					
0461 Accrued Salaries and Benefits					3,986,243
0462 Payroll Deductions and Withholding					8,003,825
0480 Unearned Revenues					
0490 Other Current Liabilities					152,190
Total Liabilities		\$4,689,041			\$18,328,964
0950 Deferred Inflows of Resources					1,782,472
Fund Balances					
0810 Nonspendable Fund Balance		21,000			88,455
0820 Restricted Fund Balance		7,167,543			7,167,543
0830 Committed Fund Balance					4,100,000
0840 Assigned Fund Balance		4,293,097			4,293,097
0850 Unassigned Fund Balance					8,012,463
Total Fund Balances		\$11,481,640			\$23,661,558
Total Liabilities, Deferred Inflows Of Resources And Fund Balances		\$16,170,681			\$43,772,994

Amounts Expressed in Whole Dollars	<u>General Fund</u> <u>(10)</u>	<u>Public Purpose Trust</u> <u>(27)</u>	<u>Other Compt Approved</u> <u>(28)</u>	<u>Athletic / Activity</u> <u>(29)</u>	<u>Capital Reserve (690.</u> <u>1850)</u> <u>(31)</u>
Revenues					
6000 Revenue from Local Sources	80,402,094				
7000 Revenue from State Sources	36,644,457				
8000 Revenue from Federal Sources	1,203,971				
Total Revenues	\$118,250,522				
Expenditures					
1000 Instruction	74,635,219				
2000 Support Services	33,136,915				
3000 Operation of Non-Instructional Services	1,587,405				
4000 Facilities Acquisition, Construction and Improvement Services					
5110 Debt Service	6,116,234				
5130 Refund of Prior Year Revenues / Receipts	17,745				
Total Expenditures	\$115,493,518				
Excess (Deficiency) Of Revenues Over Expenditures	\$2,757,004				
Other Financing Sources (Uses)					
9110 Face Value of Bonds Issued					
9120 Proceeds from Refunding of Bonds					
9130 Bond Premiums					
9200 Proceeds from Extended-Term Financing					
9300 Interfund Transfers - IN	108,401				
9400 Sale of or Compensation for Loss of Fixed Assets	1,000				
9710 Transfers from Component Units					
9720 Transfers from Primary Governments					
9910 Other Financing Sources Not Listed in the 9000 Series					
9990 Insurance Recoveries					
5120 Debt Service – Refunded Bonds					
5150 Bond Discounts					
5200 Interfund Transfers – Out	1,940,000				
5300 Transfers Out to Component Units/Primary Governments					
Total Other Financing Sources (Uses)	(\$1,830,599)				

Amounts Expressed in Whole Dollars	<u>Capital Reserve (1431)</u> <u>(32)</u>	<u>Other Capital Projects</u> <u>Fund</u> <u>(39)</u>	<u>Debt Service</u> <u>(40)</u>	<u>Permanent</u> <u>(90)</u>	<u>Total Governmental</u> <u>Funds</u>
Revenues					
6000 Revenue from Local Sources		147,583	368		80,550,045
7000 Revenue from State Sources					36,644,457
8000 Revenue from Federal Sources					1,203,971
Total Revenues		\$147,583	\$368		\$118,398,473
Expenditures					
1000 Instruction		2,047,731			76,682,950
2000 Support Services		534,004			33,670,919
3000 Operation of Non-Instructional Services		112,490			1,699,895
4000 Facilities Acquisition, Construction and Improvement Services		4,230,947			4,230,947
5110 Debt Service					6,116,234
5130 Refund of Prior Year Revenues / Receipts					17,745
Total Expenditures		\$6,925,172			\$122,418,690
Excess (Deficiency) Of Revenues Over Expenditures		(\$6,777,589)	\$368		(\$4,020,217)
Other Financing Sources (Uses)					
9110 Face Value of Bonds Issued		5,500,000			5,500,000
9120 Proceeds from Refunding of Bonds					
9130 Bond Premiums					
9200 Proceeds from Extended-Term Financing		408,093			408,093
9300 Interfund Transfers - IN		1,940,000			2,048,401
9400 Sale of or Compensation for Loss of Fixed Assets					1,000
9710 Transfers from Component Units					
9720 Transfers from Primary Governments					
9910 Other Financing Sources Not Listed in the 9000 Series					
9990 Insurance Recoveries					
5120 Debt Service – Refunded Bonds					
5150 Bond Discounts					
5200 Interfund Transfers – Out		49,688	5,806		1,995,494
5300 Transfers Out to Component Units/Primary Governments					
Total Other Financing Sources (Uses)		\$7,798,405	(\$5,806)		\$5,962,000

Amounts Expressed in Whole Dollars	<u>General Fund</u> <u>(10)</u>	<u>Public Purpose Trust</u> <u>(27)</u>	<u>Other Compt Approved</u> <u>(28)</u>	<u>Athletic / Activity</u> <u>(29)</u>	<u>Capital Reserve</u> <u>(690.</u> <u>1850)</u> <u>(31)</u>
Special And Extraordinary Items					
9920 Special Items – Gains					
9930 Extraordinary Items – Gains					
5520 Special Items – Losses					
5530 Extraordinary Items – Losses					
Net Change In Fund Balances	\$926,405				
Fund Balance					
0001 Fund Balance - Beginning of Fiscal Year	11,253,512				
Fund Balance - End Of Year	\$12,179,917				

Amounts Expressed in Whole Dollars	<u>Capital Reserve (1431)</u> <u>(32)</u>	<u>Other Capital Projects</u> <u>Fund</u> <u>(39)</u>	<u>Debt Service</u> <u>(40)</u>	<u>Permanent</u> <u>(90)</u>	<u>Total Governmental</u> <u>Funds</u>
Special And Extraordinary Items					
9920 Special Items – Gains					
9930 Extraordinary Items – Gains					
5520 Special Items – Losses					
5530 Extraordinary Items – Losses					
Net Change In Fund Balances		\$1,020,816	(\$5,438)		\$1,941,783
Fund Balance					
0001 Fund Balance - Beginning of Fiscal Year		10,460,825	5,439		21,719,776
Fund Balance - End Of Year		\$11,481,641	\$1		\$23,661,559

Amounts Expressed in Whole Dollars	<u>Food Service</u> <u>(51)</u>	<u>Child Care</u> <u>Operations</u> <u>(52)</u>	<u>Other Enterprise</u> <u>(58)</u>	<u>TOTAL</u>	<u>Internal Service</u> <u>(60)</u>
Assets And Deferred Outflows Of Resources					
Current Assets					
0100 Cash and Cash Equivalents	470,793			470,793	7,817,658
0110 Investments					240,091
0130 Due From Other Funds					355,065
0141 Due From Other Governments	11,767			11,767	
0142 State Revenue Receivable					
0143 Federal Revenue Receivable					
0146 Due from Primary Government					
0147 Due from Component Unit					
0150 Other Receivables	1,369			1,369	269,642
0170 Inventories	59,534			59,534	
0180 Prepaid Expenses (Expenditures)					
0190 Other Current Assets					
Total Current Assets	\$543,463			\$543,463	\$8,682,456
Noncurrent Assets					
0211 Land					
0212 Site Improvements (Net)					
0220 Buildings and Building Improvements (Net)					
0230 Machinery, Equipment and Furniture (Net)	46,636			46,636	
0250 Construction in Progress					
0260 Long Term Prepayments					
0290 Other Noncurrent Assets					
Total Noncurrent Assets	\$46,636			\$46,636	
0910 Deferred Outflows of Resources	566,264			566,264	
Total Assets And Deferred Outflows Of Resources	\$1,156,363			\$1,156,363	\$8,682,456

Amounts Expressed in Whole Dollars	<u>Food Service</u> <u>(51)</u>	<u>Child Care</u> <u>Operations</u> <u>(52)</u>	<u>Other Enterprise</u> <u>(58)</u>	<u>TOTAL</u>	<u>Internal Service</u> <u>(60)</u>
Liabilities And Deferred Inflows Of Resources And Net Position					
Current Liabilities					
0400 Due to Other Funds	819			819	
0411 Due to Other Governments					
0413 Due to Component Unit					
0420 Accounts Payable	1,184			1,184	
0430 Contracts Payable					
0440 Current Portion of Long-Term Debt					
0450 Short-Term Payables					
0461 Accrued Salaries and Benefits					
0462 Payroll Deductions and Withholding					
0480 Unearned Revenues	83,836			83,836	
0490 Other Current Liabilities					464,847
Total Current Liabilities	\$85,839			\$85,839	\$464,847
Noncurrent Liabilities					
0510 Bonds Payable					
0520 Extended-Term Financing Agreements Payable					
0530 Lease-Purchase Obligations					
0540 Accumulated Compensated Absences					
0550 Authority Lease Obligations					
0560 Other Post-Employment Benefits (OPEB)	308,284			308,284	
0570 Net Pension Liability	3,654,876			3,654,876	
0599 Other Noncurrent Liabilities					
Total Noncurrent Liabilities	\$3,963,160			\$3,963,160	
Total Liabilities	\$4,048,999			\$4,048,999	\$464,847
0950 Deferred Inflows of Resources	79,808			79,808	
Net Position					
0791 Net Investment in Capital Assets	46,636			46,636	
0008 Restricted Net Position (0792 – 0798)					
0799 Unrestricted Net Position	(3,019,080)			(3,019,080)	8,217,609
Total Net Position	(\$2,972,444)			(\$2,972,444)	\$8,217,609
Total Liabilities And Deferred Inflows Of Resources And Net Position	\$1,156,363			\$1,156,363	\$8,682,456

Amounts Expressed in Whole Dollars	<u>Food Service</u> <u>(51)</u>	<u>Child Care Operations</u> <u>(52)</u>	<u>Other Enterprise</u> <u>(58)</u>	<u>TOTAL</u>	<u>Internal Service</u> <u>(60)</u>
Operating Revenues					
6600 Food Service Revenue	1,737,847			1,737,847	
0071 Charges for Services					10,611,543
0072 Other Operating Revenue					
Total Operating Revenues	\$1,737,847			\$1,737,847	\$10,611,543
Operating Expenses					
100 Personnel Services – Salaries	948,360			948,360	
200 Personnel Services – Employee Benefits	524,024			524,024	10,682,063
300 Purchased Professional and Technical Services	18,960			18,960	69,987
400 Purchased Property Services	20,070			20,070	
500 Other Purchased Services	3,148			3,148	
600 Supplies	1,376,361			1,376,361	
740 Depreciation	12,933			12,933	
810 Dues and Fees	112			112	
890 Miscellaneous Expenditures					
Total Operating Expenses	\$2,903,968			\$2,903,968	\$10,752,050
Operating Income (Loss)	(\$1,166,121)			(\$1,166,121)	(\$140,507)
Non Operating Revenues (Expenses)					
6500 Earnings on Investments	519			519	30,256
6920 Contributions and Donations from Private Sources					
6930 Gains or Losses on Sale of Fixed Assets					
6991 Refunds of a Prior Year Expenditure					
7000 Revenue from State Sources	256,743			256,743	
8000 Revenue from Federal Sources	1,065,111			1,065,111	
9990 Insurance Recoveries					
820 Claims and Judgments Against the LEA					
830 Interest					
TOTAL Non Operating Revenues (Expenses)	\$1,322,373			\$1,322,373	\$30,256
Income (Loss) Before Contributions And Transfers	\$156,252			\$156,252	(\$110,251)

Amounts Expressed in Whole Dollars	<u>Food Service</u> <u>(51)</u>	<u>Child Care Operations</u> <u>(52)</u>	<u>Other Enterprise</u> <u>(58)</u>	<u>TOTAL</u>	<u>Internal Service</u> <u>(60)</u>
Contributions, Transfers, and Special and Extraordinary Items					
5200 Interfund Transfers – Out	102,595			102,595	
5300 Transfers Out to Component Units/Primary Governments					
5520 Special Items – Losses					
5530 Extraordinary Items – Losses					
9300 Interfund Transfers - IN	49,688			49,688	
9500 Capital Contributions					
9700 Transfers IN From Component Units/Primary Governments					
9920 Special Items – Gains					
9930 Extraordinary Items – Gains					
Change In Net Position	\$103,345			\$103,345	(\$110,251)
0002 Net Position - Beginning of Fiscal Year	(3,075,789)			(3,075,789)	8,327,860
0003 Accounting Changes / Residual Equity Transfers					
Net Position - End Of Year	(\$2,972,444)			(\$2,972,444)	\$8,217,609

Amounts Expressed in Whole Dollars	<u>Food Service</u> <u>(51)</u>	<u>Child Care Operations</u> <u>(52)</u>	<u>Other Enterprise</u> <u>(58)</u>	<u>TOTAL</u>	<u>Internal Service(60)</u>
Cash Flows From Operating Activities					
0011 Cash Receipts From Users	1,737,317			1,737,317	16,679,497
0012 Cash Receipts From Assessments Made to Other Funds					
0013 Cash Receipts From Earnings on Investments					
0014 Cash Receipts From Other Operating Revenue					
0015 Cash Payments To Employees For Services	1,381,651			1,381,651	
0016 Cash Payments For Insurance Claims					10,720,498
0017 Cash Payments To Suppliers For Goods and Services	1,386,396			1,386,396	69,987
0018 Cash Payments For Other Operating Expenses					
Net Cash Provided By (Used For) Operating Activities	(\$1,030,730)			(\$1,030,730)	\$5,889,012
Cash Flows From Non-Capital Financing Activities					
0021 Receipts From Local Sources - 6000					
0022 Receipts From State Sources - 7000	257,562			257,562	
0023 Receipts From Federal Sources -8000	886,956			886,956	
0024 Notes and Loans Received (Repaid)					
0025 Interest Paid on Notes/Loans - 5100-830					
0026 Operating Transfers In (Out)/Residual Equity Trans	(52,906)			(52,906)	
0027 Operating Transfers In (Out) Primary Government / Comp Unit					
0028 Receipts From Refund of Prior Year Expenditures - 6991					
0029 Special and Extraordinary Gains (losses)					
0030 Receipts from Insurance Recoveries -9990					
Net Cash Prov By (Used for) Non-Capital Financing Activities	\$1,091,612			\$1,091,612	
Cash Flows From Capital and Related Financing Activities					
0031 Payments For Fac Acq, Const, and Imp - 4000					
0032 Gain / (Loss) on Sale of Fixed Assets - 6930					
0033 Proceeds From Extended Term Financing - 9200					
0034 Principal Paid on Financing Agreements					
0035 Interest Paid on Financing Agreements - 5100-830					
0036 (Inc) Dec in Contributed Capital					
Net Cash Prov By (Used for) Capital and Related Financing Activities					
Cash Flows From Investing Activities					
0041 Earnings on Investments - 6500	519			519	30,256
0042 Purchase of Inv Securities / Deposits to Inv Pools	(49,751)			(49,751)	
0043 Receipts From Investment Pool Withdrawals					
0044 Proceeds from Sale and Maturity of Inv Securities					1,533,542

LEA : 114060753 Boyertown Area SD

Printed 1/3/2020 3:33:40 PM

0045 Loans Received (Paid)

Net Cash Prov By (Used for) Investing Activities	(\$49,232)	(\$49,232)	\$1,563,798
---	-------------------	-------------------	--------------------

LEA : 114060753 Boyertown Area SD

Printed 1/3/2020 3:33:40 PM

	<u>Food Service</u> <u>(51)</u>	<u>Child Care Operations</u> <u>(52)</u>	<u>Other Enterprise</u> <u>(58)</u>	<u>TOTAL</u>	<u>Internal Service</u> <u>(60)</u>
Net Increase (Decrease) in Cash Flows	11,650			11,650	7,452,810
0004 Cash and Cash Equivalents Beginning of Year	459,143			459,143	364,848
Cash and Cash Equivalents at Year End	\$470,793			\$470,793	\$7,817,658
Reconciliation of Operating Income (Loss) To Net Cash Provided by (Used For) Operating Activities					
0005 Operating Income (Loss) per REP	(1,166,121)			(1,166,121)	(140,507)
Adjustments					
0051 Depreciation and Net Amortization	12,933			12,933	
0052 Provision for Uncollectible Accounts					
0053 Other Adjustments					
Effect of Changes in Assets, Liabilities, Deferred Outflows and Deferred Inflows					
0054 (Inc) Dec In Accounts Receivable (0120-0150)	(661)			(661)	(269,642)
0055 Advances to Other Funds (0160)					
0056 (Inc) Dec in Inventories (0170)	(646)			(646)	
0057 (Inc) Dec in Prepaid Expenses (0180)					
0058 (Inc) Dec in Other Current or Noncurrent Assets	187,318			187,318	6,337,596
0064 Deferred Outflows (0910)	163,794			163,794	
0059 Inc (Dec) in Accounts Payable (0400-0450)	351			351	
0060 Inc (Dec) in Accrued Salaries/Benefits (0461)					
0065 Inc (Dec) in Net Pension Liabilities (0570)	(113,035)			(113,035)	
0066 Inc (Dec) in Other Postemp Benefit Oblig (0560)	3,850			3,850	
0061 Inc (Dec) in Payroll Deductions/Withholding (0462)					
0062 Inc (Dec) in Unearned Revenue (0480)	131			131	
0063 Inc (Dec) in Other Current or Noncurrent Liabilities	(154,830)			(154,830)	(38,435)
0067 Deferred Inflows (0950)	36,186			36,186	
Total Adjustments	\$135,391			\$135,391	\$6,029,519
Cash Provided By (Used for) Total	(\$1,030,730)			(\$1,030,730)	\$5,889,012

COMBINED STATEMENT OF CASH FLOWS
SCHEDULE OF NONCASH INVESTING, CAPITAL, AND FINANCING ACTIVITIES

Explanation of Transaction and Balance Sheet Effect	Amount
Total	

LEA : 114060753 Boyertown Area SD

Printed 1/3/2020 3:33:44 PM

Amounts Expressed in Whole Dollars	<u>Private Purpose Trust</u> <u>(71)</u>	<u>Investment Trust</u> <u>(72)</u>	<u>Pension Trust</u> <u>(73)</u>	<u>Activity</u> <u>(81)</u>
Assets And Deferred Outflows Of Resources				
Assets				
0100 Cash and Cash Equivalents	74,768			634,982
0110 Investments	26,334			
0130 Due From Other Funds				
0147 Due from Component Unit				
0150 Other Receivables				
0170 Inventories				
0180 Prepaid Expenses (Expenditures)				
0190 Other Current Assets				
0220 Buildings and Building Improvements (Net)				
0230 Machinery, Equipment and Furniture (Net)				
Total Assets	\$101,102			\$634,982
0910 Deferred Outflows of Resources				
Total Assets And Deferred Outflows Of Resources	\$101,102			\$634,982

LEA : 114060753 Boyertown Area SD

Printed 1/3/2020 3:33:44 PM

Amounts Expressed in Whole Dollars	<u>Other Agency</u> <u>(89)</u>	<u>Discrete Component Units</u> <u>(98)</u>	<u>Discrete Component Units</u> <u>(99)</u>	<u>Total Fiduciary Funds</u>
Assets And Deferred Outflows Of Resources				
Assets				
0100 Cash and Cash Equivalents				709,750
0110 Investments				26,334
0130 Due From Other Funds				
0147 Due from Component Unit				
0150 Other Receivables				
0170 Inventories				
0180 Prepaid Expenses (Expenditures)				
0190 Other Current Assets				
0220 Buildings and Building Improvements (Net)				
0230 Machinery, Equipment and Furniture (Net)				
Total Assets				\$736,084
0910 Deferred Outflows of Resources				
Total Assets And Deferred Outflows Of Resources				\$736,084

LEA : 114060753 Boyertown Area SD

Printed 1/3/2020 3:33:44 PM

Amounts Expressed in Whole Dollars	<u>Private Purpose Trust</u> (71)	<u>Investment Trust</u> (72)	<u>Pension Trust</u> (73)	<u>Activity</u> (81)
Liabilities, Deferred Inflows Of Resources And Net Position				
Liabilities				
0400 Due to Other Funds				
0411 Due to Other Governments				
0412 Due to Primary Government				
0413 Due to Component Unit				
0420 Accounts Payable				
0430 Contracts Payable				
0450 Short-Term Payables				
0461 Accrued Salaries and Benefits				
0462 Payroll Deductions and Withholding				
0480 Unearned Revenues				
0490 Other Current Liabilities				634,982
	436			
Total Liabilities	\$436			\$634,982
Net Position				
0950 Deferred Inflows of Resources				
0791 Net Investment in Capital Assets				
0009 Restricted Net Position (0792 – 0798)		100,666		
0799 Unrestricted Net Position				
Total Net Position		\$100,666		
Total Liabilities, Deferred Inflows Of Resources And Net Position		\$101,102		\$634,982

LEA : 114060753 Boyertown Area SD

Printed 1/3/2020 3:33:44 PM

Amounts Expressed in Whole Dollars	<u>Other Agency</u> (89)	<u>Discrete Component Units</u> (98)	<u>Discrete Component Units</u> (99)	<u>Total Fiduciary Funds</u>
Liabilities, Deferred Inflows Of Resources And Net Position				
Liabilities				
0400 Due to Other Funds				
0411 Due to Other Governments				
0412 Due to Primary Government				
0413 Due to Component Unit				
0420 Accounts Payable				
0430 Contracts Payable				
0450 Short-Term Payables				
0461 Accrued Salaries and Benefits				
0462 Payroll Deductions and Withholding				
0480 Unearned Revenues				
0490 Other Current Liabilities				635,418
Total Liabilities				\$635,418
0950 Deferred Inflows of Resources				
Net Position				
0791 Net Investment in Capital Assets				
0009 Restricted Net Position (0792 – 0798)				100,666
0799 Unrestricted Net Position				
Total Net Position				\$100,666
Total Liabilities, Deferred Inflows Of Resources And Net Position				\$736,084

Amounts Expressed in Whole Dollars	<u>Private Purpose Trust</u> <u>(71)</u>	<u>Investment Trust</u> <u>(72)</u>	<u>Pension Trust</u> <u>(73)</u>	<u>Discrete Component</u> <u>Units</u> <u>(98)</u>	<u>Discrete Component</u> <u>Units</u> <u>(99)</u>	<u>Total Fiduciary</u> <u>Funds</u>
Additions						
0091 Gifts and Contributions	18,874					18,874
0092 Other Additions	3,597					3,597
Deductions						
0093 Scholarships Awarded	23,931					23,931
0094 Other Deductions						
Change In Net Position	(\$1,460)					(\$1,460)
0006 Net Position – Beginning of Fiscal Year	102,126					102,126
0007 Net Position Held in Trust for Pension Benefits						
Net Position - End of Fiscal Year	\$100,666					\$100,666

	<u>Revenue Reported In Current Year</u>	<u>Current Year Tax Accrual</u>	<u>Prior Year Tax Accrual</u>	<u>Taxes Collected In Current Year</u>
<u>Revenue from Local Sources</u>				
6111 Current Real Estate Taxes	66,381,713.53			66,381,713.53
6112 Interim Real Estate Taxes	412,246.47			412,246.47
6113 Public Utility Realty Taxes	71,699.19			71,699.19
6114 Payments in Lieu of Current Taxes - State / Local	2,916.03			2,916.03
6120 Current Per Capita Taxes, Section 679	142,482.33			142,482.33
6141 Current Act 511 Per Capita Taxes	142,482.32			142,482.32
6143 Current Act 511 Local Services Taxes	65,115.85			65,115.85
6151 Current Act 511 Earned Income Taxes	7,572,713.00			7,572,713.00
6153 Current Act 511 Real Estate Transfer Taxes	1,218,607.64			1,218,607.64
6411 Delinquent Real Estate Taxes	1,567,058.46			1,567,058.46
6420 Delinquent Per Capita Taxes, Section 679	15,995.26			15,995.26
6440 Delinquent Local Enabling Taxes - Flat Rate Assessments	15,995.01			15,995.01
6500 Earnings on Investments	532,021.65			
6700 Revenues from LEA Activities	144,198.45			
6831 Federal Revenue Received from Other Pennsylvania Public LEAs	15,341.00			
6832 Federal IDEA Revenue Received as Pass Through	1,335,934.12			
6890 Other Revenue from Intermediary Sources	216,023.33			
6910 Rentals	199,978.62			
6920 Contributions and Donations from Private Sources	100.00			
6941 Regular Day School Tuition	1,200.00			
6942 Summer School Tuition	44,315.50			
6943 Adult Education Tuition	362.00			
6944 Receipts from Other LEAs in Pennsylvania - Education	1,516.80			
6949 Other Tuition from Patrons	3,287.20			
6969 All Other Services Provided Other Governments	9,860.91			
6991 Refunds of a Prior Year Expenditure	37,911.93			
6999 Other Revenues Not Specified Above	251,017.54			
TOTAL Revenue from Local Sources	\$80,402,094.14			\$77,609,025.09

**Revenue Reported
In Current Year**

Revenue from State Sources

7110 Basic Education Funding	15,019,054.03		
7160 Tuition for Orphans Subsidy	199,683.99		
7271 Special Education funds for School-Aged Pupils	3,582,681.32		
7292 Pre-K Counts	204,000.00		
7299 Program Revenues Not Listed Previously in the 7200 Series	5,582.27		
7311 Pupil Transportation Subsidy	3,161,847.68		
7312 Nonpublic and Charter School Pupil Transportation Subsidy	189,035.00		
7320 Rental and Sinking Fund Payments / Building Reimbursement Subsidy	704,269.38		
7330 Health Services (Medical, Dental, Nurse, Act 25)	130,979.25		
7340 State Property Tax Reduction Allocation	1,741,752.15		
7361 School Safety and Security Grants	25,000.00		
7505 Ready to Learn Block Grant	776,832.00		
7810 State Share of Social Security and Medicare Taxes	1,959,460.12		
7820 State Share of Retirement Contributions	8,944,279.75		
TOTAL Revenue from State Sources	\$36,644,456.94		

**Revenue Reported
In Current Year**

Revenue from Federal Sources

8514 NCLB, Title I - Improving the Academic Achievement of the Disadvantaged	670,409.58		
8515 NCLB, Title II - Preparing, Training and Recruiting High Quality Teachers and Principals	164,593.32		
8517 NCLB, Title IV - 21St Century Schools	27,987.03		
8810 School-Based Access Medicaid Reimbursement Program (SBAP) Reimbursements (Access)	300,720.61		
8820 Medical Assistance Reimbursement for Administrative Claiming (Quarterly) Program	40,260.10		
TOTAL Revenue from Federal Sources	\$1,203,970.64		

Revenue Reported
In Current Year

Other Financing Sources

9340 Debt Service Fund Transfers	108,401.34		
9400 Sale of or Compensation for Loss of Fixed Assets	1,000.00		
TOTAL Other Financing Sources	\$109,401.34		
TOTAL FROM ALL SOURCES	\$118,359,923.06		\$77,609,025.09

Revenue from Local Sources	80,402,094.14
Revenue from State Sources	36,644,456.94
Revenue from Federal Sources	1,203,970.64
Other Financing Sources	109,401.34
TOTAL FROM ALL SOURCES	\$118,359,923.06

General Fund (10)

	<u>Total</u>
1000 Instruction	
100 Personnel Services – Salaries	
100 Personnel Services – Salaries	39,882,903.49
Total Personnel Services – Salaries	\$39,882,903.49
200 Personnel Services – Employee Benefits	
210 Group Insurance – Contracted Provider	80,499.86
220 Social Security Contributions	2,968,264.66
230 PSERS Retirement Contributions	13,284,278.41
250 Unemployment Compensation	15,455.34
260 Workers’ Compensation	199,277.03
270 Group Insurance – Self-Insurance	6,823,769.44
Total Personnel Services – Employee Benefits	\$23,371,544.74
300 Purchased Professional and Technical Services	
322 Professional Educational Services – Ius	465,432.44
329 Professional Educational Services – Other	1,366.44
330 Other Professional Services	1,599,448.62
350 Security / Safety Services	1,177.59
Total Purchased Professional and Technical Services	\$2,067,425.09
400 Purchased Property Services	
410 Cleaning Services	999.50
430 Repairs and Maintenance Services	25,394.77
440 Rentals	1,662.42
Total Purchased Property Services	\$28,056.69
500 Other Purchased Services	
510 Student Transportation Services	177,133.64
530 Communications	32,945.59
561 Tuition To Other School Districts Within the State	151,919.67
562 Tuition To Pennsylvania Charter Schools	2,552,976.02
563 Tuition To Nonpublic Schools	92,138.70
564 Tuition To Career and Technology Centers	2,318,730.63
566 Tuition To Institutions of Higher Education and Technical Institutes	5,850.00
567 Tuition To Approved Private Schools (APS) and PA Chartered Schools for the Deaf and Blind	652,223.68
568 Tuition To Private Residential Rehabilitative Institutions (PRRI) [In-State] and Detention Centers	174,432.58
569 Tuition – Other	2,140,988.86
580 Travel	18,501.69
594 IU Payment By Withholding for Institutionalized Children’s Programs – Special Classes	1,179.57
Total Other Purchased Services	\$8,319,020.63
600 Supplies	
610 General Supplies	435,543.34
630 Food	17,460.16
640 Books and Periodicals	92,472.30
650 Supplies & Fees – Technology Related	408,475.63
Total Supplies	\$953,951.43

General Fund (10)

1000 Instruction	<u>Total</u>
700 <u>Property</u>	
752 Capital Equipment – Original and Additional	6,000.00
Total Property	\$6,000.00
800 <u>Other Objects</u>	
810 Dues and Fees	6,317.00
Total Other Objects	\$6,317.00
Total 1000 Instruction	\$74,635,219.07

General Fund (10)

1100 Regular Programs – Elementary / Secondary

	<u>Elementary</u>	<u>Secondary</u>	<u>Federal</u>	<u>Total</u>
100 Personnel Services – Salaries				
100 Personnel Services – Salaries	15,412,506.17	14,087,365.06	592,435.55	30,092,306.78
Total Personnel Services – Salaries	\$15,412,506.17	\$14,087,365.06	\$592,435.55	\$30,092,306.78
200 Personnel Services – Employee Benefits				
210 Group Insurance – Contracted Provider	33,088.58	29,370.79	847.53	63,306.90
220 Social Security Contributions	1,144,621.78	1,047,571.35	44,778.11	2,236,971.24
230 PSERS Retirement Contributions	5,391,234.85	4,687,423.38	97,518.48	10,176,176.71
250 Unemployment Compensation	657.71	14,797.63		15,455.34
260 Workers' Compensation	76,982.02	70,402.29	2,962.34	150,346.65
270 Group Insurance – Self-Insurance	2,880,760.65	2,468,043.96	75,866.33	5,424,670.94
Total Personnel Services – Employee Benefits	\$9,527,345.59	\$8,317,609.40	\$221,972.79	\$18,066,927.78
300 Purchased Professional and Technical Services				
322 Professional Educational Services – lus			2,017.00	2,017.00
350 Security / Safety Services		1,177.59		1,177.59
Total Purchased Professional and Technical Services		\$1,177.59	\$2,017.00	\$3,194.59
400 Purchased Property Services				
410 Cleaning Services		999.50		999.50
430 Repairs and Maintenance Services	3,666.39	15,108.30		18,774.69
Total Purchased Property Services	\$3,666.39	\$16,107.80		\$19,774.19
500 Other Purchased Services				
510 Student Transportation Services	11,579.99	30,550.64		42,130.63
530 Communications	5,786.45	23,318.20		29,104.65
562 Tuition To Pennsylvania Charter Schools	611,410.50	1,314,666.50		1,926,077.00
568 Tuition To Private Residential Rehabilitative Institutions (PRRI) [In-State] and Detention Centers	6,690.40	6,690.38		13,380.78
580 Travel	1,491.25	2,871.20	4,831.76	9,194.21
Total Other Purchased Services	\$636,958.59	\$1,378,096.92	\$4,831.76	\$2,019,887.27
600 Supplies				
610 General Supplies	130,920.89	229,603.83	13,090.85	373,615.57
630 Food		263.80		263.80
640 Books and Periodicals	14,498.55	29,771.56		44,270.11
650 Supplies & Fees – Technology Related	200,349.39	180,605.39		380,954.78
Total Supplies	\$345,768.83	\$440,244.58	\$13,090.85	\$799,104.26
700 Property				
752 Capital Equipment – Original and Additional	6,000.00			6,000.00
Total Property	\$6,000.00			\$6,000.00
800 Other Objects				
810 Dues and Fees		2,402.00	3,822.00	6,224.00
Total Other Objects		\$2,402.00	\$3,822.00	\$6,224.00
Total 1100 Regular Programs – Elementary / Secondary	\$25,932,245.57	\$24,243,003.35	\$838,169.95	\$51,013,418.87

General Fund (10)

1110 Regular Programs

	<u>Elementary</u>	<u>Secondary</u>	<u>Federal</u>	<u>Total</u>
100 Personnel Services – Salaries				
100 Personnel Services – Salaries	15,412,506.17	14,087,365.06		29,499,871.23
Total Personnel Services – Salaries	\$15,412,506.17	\$14,087,365.06		\$29,499,871.23
200 Personnel Services – Employee Benefits				
210 Group Insurance – Contracted Provider	33,088.58	29,370.79		62,459.37
220 Social Security Contributions	1,144,621.78	1,047,571.35		2,192,193.13
230 PSERS Retirement Contributions	5,391,234.85	4,687,423.38		10,078,658.23
250 Unemployment Compensation	657.71	14,797.63		15,455.34
260 Workers' Compensation	76,982.02	70,402.29		147,384.31
270 Group Insurance – Self-Insurance	2,880,760.65	2,468,043.96		5,348,804.61
Total Personnel Services – Employee Benefits	\$9,527,345.59	\$8,317,609.40		\$17,844,954.99
300 Purchased Professional and Technical Services				
350 Security / Safety Services		1,177.59		1,177.59
Total Purchased Professional and Technical Services		\$1,177.59		\$1,177.59
400 Purchased Property Services				
410 Cleaning Services		999.50		999.50
430 Repairs and Maintenance Services	3,666.39	15,108.30		18,774.69
Total Purchased Property Services	\$3,666.39	\$16,107.80		\$19,774.19
500 Other Purchased Services				
510 Student Transportation Services	11,579.99	30,550.64		42,130.63
530 Communications	5,786.45	23,318.20		29,104.65
562 Tuition To Pennsylvania Charter Schools	611,410.50	1,314,666.50		1,926,077.00
568 Tuition To Private Residential Rehabilitative Institutions (PRRI) [In-State] and Detention Centers	6,690.40	6,690.38		13,380.78
580 Travel	1,491.25	2,871.20		4,362.45
Total Other Purchased Services	\$636,958.59	\$1,378,096.92		\$2,015,055.51
600 Supplies				
610 General Supplies	130,920.89	229,603.83		360,524.72
630 Food		263.80		263.80
640 Books and Periodicals	14,498.55	29,771.56		44,270.11
650 Supplies & Fees – Technology Related	200,349.39	180,605.39		380,954.78
Total Supplies	\$345,768.83	\$440,244.58		\$786,013.41
700 Property				
752 Capital Equipment – Original and Additional	6,000.00			6,000.00
Total Property	\$6,000.00			\$6,000.00
800 Other Objects				
810 Dues and Fees		2,402.00		2,402.00
Total Other Objects		\$2,402.00		\$2,402.00
Total 1110 Regular Programs	\$25,932,245.57	\$24,243,003.35		\$50,175,248.92

LEA : 114060753 Boyertown Area SD

Printed 1/3/2020 3:34:02 PM

General Fund (10)

1190 Federally-Funded Regular Programs

	<u>Elementary</u>	<u>Secondary</u>	<u>Federal</u>	<u>Total</u>
100 Personnel Services – Salaries				
100 Personnel Services – Salaries			592,435.55	592,435.55
Total Personnel Services – Salaries			\$592,435.55	\$592,435.55
200 Personnel Services – Employee Benefits				
210 Group Insurance – Contracted Provider			847.53	847.53
220 Social Security Contributions			44,778.11	44,778.11
230 PSERS Retirement Contributions			97,518.48	97,518.48
260 Workers' Compensation			2,962.34	2,962.34
270 Group Insurance – Self-Insurance			75,866.33	75,866.33
Total Personnel Services – Employee Benefits			\$221,972.79	\$221,972.79
300 Purchased Professional and Technical Services				
322 Professional Educational Services – lus			2,017.00	2,017.00
Total Purchased Professional and Technical Services			\$2,017.00	\$2,017.00
500 Other Purchased Services				
580 Travel			4,831.76	4,831.76
Total Other Purchased Services			\$4,831.76	\$4,831.76
600 Supplies				
610 General Supplies			13,090.85	13,090.85
Total Supplies			\$13,090.85	\$13,090.85
800 Other Objects				
810 Dues and Fees			3,822.00	3,822.00
Total Other Objects			\$3,822.00	\$3,822.00
Total 1190 Federally-Funded Regular Programs			\$838,169.95	\$838,169.95

General Fund (10)

1200 Special Programs – Elementary / Secondary

	<u>Elementary</u>	<u>Secondary</u>	<u>Federal</u>	<u>Total</u>
100 Personnel Services – Salaries				
100 Personnel Services – Salaries	4,304,640.81	4,496,460.40	810,651.98	9,611,753.19
Total Personnel Services – Salaries	\$4,304,640.81	\$4,496,460.40	\$810,651.98	\$9,611,753.19
200 Personnel Services – Employee Benefits				
210 Group Insurance – Contracted Provider	7,069.57	7,503.16	2,095.70	16,668.43
220 Social Security Contributions	321,508.99	335,896.74	60,291.97	717,697.70
230 PSERS Retirement Contributions	1,433,401.62	1,496,795.71	114,520.41	3,044,717.74
260 Workers' Compensation	21,510.41	22,470.03	4,053.90	48,034.34
270 Group Insurance – Self-Insurance	580,400.88	652,080.69	145,774.85	1,378,256.42
Total Personnel Services – Employee Benefits	\$2,363,891.47	\$2,514,746.33	\$326,736.83	\$5,205,374.63
300 Purchased Professional and Technical Services				
322 Professional Educational Services – lus	72,302.65	374,545.35	15,341.00	462,189.00
329 Professional Educational Services – Other	(3,633.96)	4,802.40		1,168.44
330 Other Professional Services	665,310.51	909,548.03	7,046.80	1,581,905.34
Total Purchased Professional and Technical Services	\$733,979.20	\$1,288,895.78	\$22,387.80	\$2,045,262.78
400 Purchased Property Services				
430 Repairs and Maintenance Services		524.08	845.00	1,369.08
440 Rentals	873.44	788.98		1,662.42
Total Purchased Property Services	\$873.44	\$1,313.06	\$845.00	\$3,031.50
500 Other Purchased Services				
510 Student Transportation Services	122,048.35	12,954.66		135,003.01
530 Communications	1,339.59	1,210.07	1,226.81	3,776.47
561 Tuition To Other School Districts Within the State		28,019.11		28,019.11
562 Tuition To Pennsylvania Charter Schools	93,965.29	532,933.73		626,899.02
563 Tuition To Nonpublic Schools	4,550.00	11,820.00		16,370.00
567 Tuition To Approved Private Schools (APS) and PA Chartered Schools for the Deaf and Blind	204,092.54	225,694.88	222,436.26	652,223.68
568 Tuition To Private Residential Rehabilitative Institutions (PRRI) [In-State] and Detention Centers		4,361.80	156,690.00	161,051.80
569 Tuition – Other	193,428.13	1,939,960.73		2,133,388.86
580 Travel	3,256.83	2,498.62		5,755.45
594 IU Payment By Withholding for Institutionalized Children's Programs – Special Classes	619.75	559.82		1,179.57
Total Other Purchased Services	\$623,300.48	\$2,760,013.42	\$380,353.07	\$3,763,666.97
600 Supplies				
610 General Supplies	16,060.22	16,121.54	542.89	32,724.65
640 Books and Periodicals	22,093.25	25,444.92	499.98	48,038.15
650 Supplies & Fees – Technology Related	10,084.35	10,878.36	6,558.14	27,520.85
Total Supplies	\$48,237.82	\$52,444.82	\$7,601.01	\$108,283.65
800 Other Objects				
810 Dues and Fees	21.00	72.00		93.00
Total Other Objects	\$21.00	\$72.00		\$93.00
Total 1200 Special Programs – Elementary / Secondary	\$8,074,944.22	\$11,113,945.81	\$1,548,575.69	\$20,737,465.72

General Fund (10)

1210 Life Skills Support

	<u>Elementary</u>	<u>Secondary</u>	<u>Federal</u>	<u>Total</u>
100 Personnel Services – Salaries				
100 Personnel Services – Salaries	268,910.12	334,556.57	79,252.92	682,719.61
Total Personnel Services – Salaries	\$268,910.12	\$334,556.57	\$79,252.92	\$682,719.61
200 Personnel Services – Employee Benefits				
210 Group Insurance – Contracted Provider	253.52	381.28	190.64	825.44
220 Social Security Contributions	20,193.25	25,114.88	5,984.54	51,292.67
230 PSERS Retirement Contributions	89,762.85	111,695.15	11,131.56	212,589.56
260 Workers' Compensation	1,344.63	1,673.02	396.35	3,414.00
270 Group Insurance – Self-Insurance	22,770.11	39,682.65	7,629.99	70,082.75
Total Personnel Services – Employee Benefits	\$134,324.36	\$178,546.98	\$25,333.08	\$338,204.42
300 Purchased Professional and Technical Services				
322 Professional Educational Services – lus		112,686.42		112,686.42
329 Professional Educational Services – Other		1,100.00		1,100.00
330 Other Professional Services	23,411.21	26,953.71		50,364.92
Total Purchased Professional and Technical Services	\$23,411.21	\$140,740.13		\$164,151.34
400 Purchased Property Services				
430 Repairs and Maintenance Services		250.00		250.00
Total Purchased Property Services		\$250.00		\$250.00
500 Other Purchased Services				
510 Student Transportation Services	3,016.84	1,569.91		4,586.75
567 Tuition To Approved Private Schools (APS) and PA Chartered Schools for the Deaf and Blind	21,048.42	41,013.80	79,310.18	141,372.40
568 Tuition To Private Residential Rehabilitative Institutions (PRRI) [In-State] and Detention Centers		120.00		120.00
Total Other Purchased Services	\$24,065.26	\$42,703.71	\$79,310.18	\$146,079.15
600 Supplies				
610 General Supplies	2,471.28	3,735.96	413.99	6,621.23
640 Books and Periodicals	329.98	952.07	499.98	1,782.03
650 Supplies & Fees – Technology Related			2,164.19	2,164.19
Total Supplies	\$2,801.26	\$4,688.03	\$3,078.16	\$10,567.45
800 Other Objects				
810 Dues and Fees	21.00	72.00		93.00
Total Other Objects	\$21.00	\$72.00		\$93.00
Total 1210 Life Skills Support	\$453,533.21	\$701,557.42	\$186,974.34	\$1,342,064.97

General Fund (10)

1220 Sensory Support

	<u>Elementary</u>	<u>Secondary</u>	<u>Federal</u>	<u>Total</u>
100 Personnel Services – Salaries				
100 Personnel Services – Salaries	506,534.85	259,385.91	73,547.92	839,468.68
Total Personnel Services – Salaries	\$506,534.85	\$259,385.91	\$73,547.92	\$839,468.68
200 Personnel Services – Employee Benefits				
210 Group Insurance – Contracted Provider	1,083.04	617.68	190.64	1,891.36
220 Social Security Contributions	37,388.94	19,033.41	5,461.41	61,883.76
230 PSERS Retirement Contributions	169,334.82	86,712.33	10,397.77	266,444.92
260 Workers' Compensation	2,533.21	1,296.75	367.81	4,197.77
270 Group Insurance – Self-Insurance	83,493.07	50,883.72	14,500.77	148,877.56
Total Personnel Services – Employee Benefits	\$293,833.08	\$158,543.89	\$30,918.40	\$483,295.37
300 Purchased Professional and Technical Services				
322 Professional Educational Services – lus	17,514.06	22,970.99		40,485.05
329 Professional Educational Services – Other		2,000.00		2,000.00
330 Other Professional Services	309,641.72	143,263.87		452,905.59
Total Purchased Professional and Technical Services	\$327,155.78	\$168,234.86		\$495,390.64
400 Purchased Property Services				
430 Repairs and Maintenance Services		165.00	845.00	1,010.00
Total Purchased Property Services		\$165.00	\$845.00	\$1,010.00
500 Other Purchased Services				
580 Travel	286.89	254.04		540.93
Total Other Purchased Services	\$286.89	\$254.04		\$540.93
600 Supplies				
610 General Supplies	1,670.79	2,189.14		3,859.93
640 Books and Periodicals	625.72	842.29		1,468.01
650 Supplies & Fees – Technology Related		60.00	4,393.95	4,453.95
Total Supplies	\$2,296.51	\$3,091.43	\$4,393.95	\$9,781.89
Total 1220 Sensory Support	\$1,130,107.11	\$589,675.13	\$109,705.27	\$1,829,487.51

General Fund (10)

1230 Emotional Support

	<u>Elementary</u>	<u>Secondary</u>	<u>Federal</u>	<u>Total</u>
100 Personnel Services – Salaries				
100 Personnel Services – Salaries	332,121.21	526,419.37	288,058.27	1,146,598.85
Total Personnel Services – Salaries	\$332,121.21	\$526,419.37	\$288,058.27	\$1,146,598.85
200 Personnel Services – Employee Benefits				
210 Group Insurance – Contracted Provider	277.36	452.88	584.00	1,314.24
220 Social Security Contributions	25,163.82	39,890.27	21,641.15	86,695.24
230 PSERS Retirement Contributions	110,851.97	175,773.88	40,770.45	327,396.30
260 Workers' Compensation	1,660.78	2,632.48	1,440.44	5,733.70
270 Group Insurance – Self-Insurance	24,285.79	33,550.71	35,062.98	92,899.48
Total Personnel Services – Employee Benefits	\$162,239.72	\$252,300.22	\$99,499.02	\$514,038.96
300 Purchased Professional and Technical Services				
322 Professional Educational Services – lus		182,595.70		182,595.70
329 Professional Educational Services – Other		3,500.00		3,500.00
330 Other Professional Services	92,855.48	387,674.37		480,529.85
Total Purchased Professional and Technical Services	\$92,855.48	\$573,770.07		\$666,625.55
400 Purchased Property Services				
430 Repairs and Maintenance Services		109.08		109.08
Total Purchased Property Services		\$109.08		\$109.08
500 Other Purchased Services				
510 Student Transportation Services	198.81	11,180.00		11,378.81
561 Tuition To Other School Districts Within the State		27,839.47		27,839.47
563 Tuition To Nonpublic Schools	4,550.00	11,340.00		15,890.00
567 Tuition To Approved Private Schools (APS) and PA Chartered Schools for the Deaf and Blind		19,335.18	82,456.08	101,791.26
568 Tuition To Private Residential Rehabilitative Institutions (PRRI) [In-State] and Detention Centers		3,841.80	156,690.00	160,531.80
569 Tuition – Other	193,428.13	1,916,040.75		2,109,468.88
580 Travel		467.36		467.36
Total Other Purchased Services	\$198,176.94	\$1,990,044.56	\$239,146.08	\$2,427,367.58
600 Supplies				
610 General Supplies	886.55	2,137.15		3,023.70
640 Books and Periodicals		46.90		46.90
650 Supplies & Fees – Technology Related		1,457.05		1,457.05
Total Supplies	\$886.55	\$3,641.10		\$4,527.65
Total 1230 Emotional Support	\$786,279.90	\$3,346,284.40	\$626,703.37	\$4,759,267.67

General Fund (10)

1240 Academic Support

	<u>Elementary</u>	<u>Secondary</u>	<u>Federal</u>	<u>Total</u>
100 Personnel Services – Salaries				
100 Personnel Services – Salaries	2,806,718.47	3,162,364.24	344,504.57	6,313,587.28
Total Personnel Services – Salaries	\$2,806,718.47	\$3,162,364.24	\$344,504.57	\$6,313,587.28
200 Personnel Services – Employee Benefits				
210 Group Insurance – Contracted Provider	4,581.75	5,547.62	874.60	11,003.97
220 Social Security Contributions	209,776.52	235,978.04	25,321.69	471,076.25
230 PSERS Retirement Contributions	938,115.54	1,052,790.93	48,502.56	2,039,409.03
260 Workers' Compensation	14,036.04	15,814.85	1,722.79	31,573.68
270 Group Insurance – Self-Insurance	391,739.28	497,161.77	82,829.33	971,730.38
Total Personnel Services – Employee Benefits	\$1,558,249.13	\$1,807,293.21	\$159,250.97	\$3,524,793.31
300 Purchased Professional and Technical Services				
322 Professional Educational Services – lus	616.09	56,292.24		56,908.33
329 Professional Educational Services – Other		1,485.00		1,485.00
330 Other Professional Services	1,387.50	149,515.89		150,903.39
Total Purchased Professional and Technical Services	\$2,003.59	\$207,293.13		\$209,296.72
500 Other Purchased Services				
510 Student Transportation Services		204.75		204.75
561 Tuition To Other School Districts Within the State		179.64		179.64
563 Tuition To Nonpublic Schools		480.00		480.00
567 Tuition To Approved Private Schools (APS) and PA Chartered Schools for the Deaf and Blind			60,670.00	60,670.00
568 Tuition To Private Residential Rehabilitative Institutions (PRRI) [In-State] and Detention Centers		400.00		400.00
569 Tuition – Other		23,919.98		23,919.98
580 Travel	1,133.19	107.04		1,240.23
Total Other Purchased Services	\$1,133.19	\$25,291.41	\$60,670.00	\$87,094.60
600 Supplies				
610 General Supplies	4,238.86	5,074.29		9,313.15
640 Books and Periodicals	19,312.10	4,472.65		23,784.75
650 Supplies & Fees – Technology Related	85.04	328.81		413.85
Total Supplies	\$23,636.00	\$9,875.75		\$33,511.75
Total 1240 Academic Support	\$4,391,740.38	\$5,212,117.74	\$564,425.54	\$10,168,283.66

General Fund (10)

1241 Learning Support – Public

	<u>Elementary</u>	<u>Secondary</u>	<u>Federal</u>	<u>Total</u>
100 Personnel Services – Salaries				
100 Personnel Services – Salaries	2,685,637.80	2,910,488.86	344,504.57	5,940,631.23
Total Personnel Services – Salaries	\$2,685,637.80	\$2,910,488.86	\$344,504.57	\$5,940,631.23
200 Personnel Services – Employee Benefits				
210 Group Insurance – Contracted Provider	4,356.79	5,017.18	874.60	10,248.57
220 Social Security Contributions	200,619.19	217,082.70	25,321.69	443,023.58
230 PSERS Retirement Contributions	897,656.73	969,585.81	48,502.56	1,915,745.10
260 Workers' Compensation	13,430.66	14,555.54	1,722.79	29,708.99
270 Group Insurance – Self-Insurance	371,899.20	449,078.74	82,829.33	903,807.27
Total Personnel Services – Employee Benefits	\$1,487,962.57	\$1,655,319.97	\$159,250.97	\$3,302,533.51
300 Purchased Professional and Technical Services				
322 Professional Educational Services – lus	348.00	56,292.24		56,640.24
329 Professional Educational Services – Other		1,485.00		1,485.00
330 Other Professional Services	1,387.50	149,515.89		150,903.39
Total Purchased Professional and Technical Services	\$1,735.50	\$207,293.13		\$209,028.63
500 Other Purchased Services				
561 Tuition To Other School Districts Within the State		179.64		179.64
563 Tuition To Nonpublic Schools		480.00		480.00
567 Tuition To Approved Private Schools (APS) and PA Chartered Schools for the Deaf and Blind			60,670.00	60,670.00
568 Tuition To Private Residential Rehabilitative Institutions (PRRI) [In-State] and Detention Centers		400.00		400.00
569 Tuition – Other		23,919.98		23,919.98
580 Travel	1,133.19	107.04		1,240.23
Total Other Purchased Services	\$1,133.19	\$25,086.66	\$60,670.00	\$86,889.85
600 Supplies				
610 General Supplies	2,060.23	3,905.04		5,965.27
640 Books and Periodicals	19,312.10	4,276.33		23,588.43
650 Supplies & Fees – Technology Related		9.98		9.98
Total Supplies	\$21,372.33	\$8,191.35		\$29,563.68
Total 1241 Learning Support – Public	\$4,197,841.39	\$4,806,379.97	\$564,425.54	\$9,568,646.90

General Fund (10)

	<u>Elementary</u>	<u>Secondary</u>	<u>Federal</u>	<u>Total</u>
1243 Gifted Support				
100 Personnel Services – Salaries				
100 Personnel Services – Salaries	121,080.67	251,875.38		372,956.05
Total Personnel Services – Salaries	\$121,080.67	\$251,875.38		\$372,956.05
200 Personnel Services – Employee Benefits				
210 Group Insurance – Contracted Provider	224.96	530.44		755.40
220 Social Security Contributions	9,157.33	18,895.34		28,052.67
230 PSERS Retirement Contributions	40,458.81	83,205.12		123,663.93
260 Workers' Compensation	605.38	1,259.31		1,864.69
270 Group Insurance – Self-Insurance	19,840.08	48,083.03		67,923.11
Total Personnel Services – Employee Benefits	\$70,286.56	\$151,973.24		\$222,259.80
300 Purchased Professional and Technical Services				
322 Professional Educational Services – lus	268.09			268.09
Total Purchased Professional and Technical Services	\$268.09			\$268.09
500 Other Purchased Services				
510 Student Transportation Services		204.75		204.75
Total Other Purchased Services		\$204.75		\$204.75
600 Supplies				
610 General Supplies	2,178.63	1,169.25		3,347.88
640 Books and Periodicals		196.32		196.32
650 Supplies & Fees – Technology Related	85.04	318.83		403.87
Total Supplies	\$2,263.67	\$1,684.40		\$3,948.07
Total 1243 Gifted Support	\$193,898.99	\$405,737.77		\$599,636.76

General Fund (10)

1260 Physical Support

	<u>Elementary</u>	<u>Secondary</u>	<u>Federal</u>	<u>Total</u>
100 Personnel Services – Salaries				
100 Personnel Services – Salaries	355,545.19	198,203.35		553,748.54
Total Personnel Services – Salaries	\$355,545.19	\$198,203.35		\$553,748.54
200 Personnel Services – Employee Benefits				
210 Group Insurance – Contracted Provider	873.90	503.70		1,377.60
220 Social Security Contributions	26,332.80	14,700.42		41,033.22
230 PSERS Retirement Contributions	117,792.46	65,192.92		182,985.38
260 Workers' Compensation	1,761.70	975.26		2,736.96
270 Group Insurance – Self-Insurance	58,112.63	30,801.84		88,914.47
Total Personnel Services – Employee Benefits	\$204,873.49	\$112,174.14		\$317,047.63
300 Purchased Professional and Technical Services				
330 Other Professional Services	24,227.45	9,023.75		33,251.20
Total Purchased Professional and Technical Services	\$24,227.45	\$9,023.75		\$33,251.20
500 Other Purchased Services				
580 Travel	444.44	412.49		856.93
Total Other Purchased Services	\$444.44	\$412.49		\$856.93
600 Supplies				
610 General Supplies	3,983.27	870.53		4,853.80
640 Books and Periodicals	175.96			175.96
Total Supplies	\$4,159.23	\$870.53		\$5,029.76
Total 1260 Physical Support	\$589,249.80	\$320,684.26		\$909,934.06

General Fund (10)

1280 Early Intervention Support

300 Purchased Professional and Technical Services

	<u>Elementary</u>	<u>Secondary</u>	<u>Federal</u>	<u>Total</u>
322 Professional Educational Services – lus	54,172.50		15,341.00	69,513.50
Total Purchased Professional and Technical Services	\$54,172.50		\$15,341.00	\$69,513.50

500 Other Purchased Services

510 Student Transportation Services	118,832.70			118,832.70
Total Other Purchased Services	\$118,832.70			\$118,832.70

Total 1280 Early Intervention Support	\$173,005.20		\$15,341.00	\$188,346.20
--	---------------------	--	--------------------	---------------------

General Fund (10)

	<u>Elementary</u>	<u>Secondary</u>	<u>Federal</u>	<u>Total</u>
1290 Special Programs - Other Support				
100 Personnel Services – Salaries				
100 Personnel Services – Salaries	34,810.97	15,530.96	25,288.30	75,630.23
Total Personnel Services – Salaries	\$34,810.97	\$15,530.96	\$25,288.30	\$75,630.23
200 Personnel Services – Employee Benefits				
210 Group Insurance – Contracted Provider			255.82	255.82
220 Social Security Contributions	2,653.66	1,179.72	1,883.18	5,716.56
230 PSERS Retirement Contributions	7,543.98	4,630.50	3,718.07	15,892.55
260 Workers' Compensation	174.05	77.67	126.51	378.23
270 Group Insurance – Self-Insurance			5,751.78	5,751.78
Total Personnel Services – Employee Benefits	\$10,371.69	\$5,887.89	\$11,735.36	\$27,994.94
300 Purchased Professional and Technical Services				
329 Professional Educational Services – Other	(3,633.96)	(3,282.60)		(6,916.56)
330 Other Professional Services	213,787.15	193,116.44	7,046.80	413,950.39
Total Purchased Professional and Technical Services	\$210,153.19	\$189,833.84	\$7,046.80	\$407,033.83
400 Purchased Property Services				
440 Rentals	873.44	788.98		1,662.42
Total Purchased Property Services	\$873.44	\$788.98		\$1,662.42
500 Other Purchased Services				
530 Communications	1,339.59	1,210.07	1,226.81	3,776.47
562 Tuition To Pennsylvania Charter Schools	93,965.29	532,933.73		626,899.02
567 Tuition To Approved Private Schools (APS) and PA Chartered Schools for the Deaf and Blind	183,044.12	165,345.90		348,390.02
580 Travel	1,392.31	1,257.69		2,650.00
594 IU Payment By Withholding for Institutionalized Children's Programs – Special Classes	619.75	559.82		1,179.57
Total Other Purchased Services	\$280,361.06	\$701,307.21	\$1,226.81	\$982,895.08
600 Supplies				
610 General Supplies	2,809.47	2,114.47	128.90	5,052.84
640 Books and Periodicals	1,649.49	19,131.01		20,780.50
650 Supplies & Fees – Technology Related	9,999.31	9,032.50		19,031.81
Total Supplies	\$14,458.27	\$30,277.98	\$128.90	\$44,865.15
Total 1290 Special Programs - Other Support	\$551,028.62	\$943,626.86	\$45,426.17	\$1,540,081.65

LEA : 114060753 Boyertown Area SD

Printed 1/3/2020 3:34:02 PM

General Fund (10)

1300 Vocational Education

Elementary

Secondary

Federal

Total

500 Other Purchased Services

564 Tuition To Career and Technology Centers

2,318,730.63

2,318,730.63

Total Other Purchased Services

\$2,318,730.63

\$2,318,730.63

Total 1300 Vocational Education

\$2,318,730.63

\$2,318,730.63

General Fund (10)

1400 Other Instructional Programs – Elementary / Secondary

	<u>Elementary</u>	<u>Secondary</u>	<u>Federal</u>	<u>Total</u>
100 Personnel Services – Salaries				
100 Personnel Services – Salaries	23,284.30	60,504.97		83,789.27
Total Personnel Services – Salaries	\$23,284.30	\$60,504.97		\$83,789.27
200 Personnel Services – Employee Benefits				
210 Group Insurance – Contracted Provider		333.89		333.89
220 Social Security Contributions	1,779.93	4,634.13		6,414.06
230 PSERS Retirement Contributions	7,783.92	20,105.36		27,889.28
260 Workers' Compensation	116.47	304.23		420.70
270 Group Insurance – Self-Insurance		1,002.00		1,002.00
Total Personnel Services – Employee Benefits	\$9,680.32	\$26,379.61		\$36,059.93
300 Purchased Professional and Technical Services				
322 Professional Educational Services – lus		329.50		329.50
330 Other Professional Services		4,693.28		4,693.28
Total Purchased Professional and Technical Services		\$5,022.78		\$5,022.78
500 Other Purchased Services				
530 Communications		64.47		64.47
561 Tuition To Other School Districts Within the State		123,900.56		123,900.56
563 Tuition To Nonpublic Schools	5,139.12	70,629.58		75,768.70
566 Tuition To Institutions of Higher Education and Technical Institutes		5,850.00		5,850.00
569 Tuition – Other		7,600.00		7,600.00
580 Travel	565.97	486.06		1,052.03
Total Other Purchased Services	\$5,705.09	\$208,530.67		\$214,235.76
600 Supplies				
610 General Supplies	33.10	29.90		63.00
Total Supplies	\$33.10	\$29.90		\$63.00
Total 1400 Other Instructional Programs – Elementary / Secondary	\$38,702.81	\$300,467.93		\$339,170.74

General Fund (10)

1420 Summer School

100 Personnel Services – Salaries

	<u>Elementary</u>	<u>Secondary</u>	<u>Federal</u>	<u>Total</u>
100 Personnel Services – Salaries	21,755.30	27,286.54		49,041.84
Total Personnel Services – Salaries	\$21,755.30	\$27,286.54		\$49,041.84

200 Personnel Services – Employee Benefits

220 Social Security Contributions	1,664.41	2,116.32		3,780.73
230 PSERS Retirement Contributions	7,272.78	9,028.56		16,301.34
260 Workers' Compensation	108.81	138.37		247.18
Total Personnel Services – Employee Benefits	\$9,046.00	\$11,283.25		\$20,329.25

600 Supplies

610 General Supplies	33.10	29.90		63.00
Total Supplies	\$33.10	\$29.90		\$63.00
Total 1420 Summer School	\$30,834.40	\$38,599.69		\$69,434.09

General Fund (10)

	<u>Elementary</u>	<u>Secondary</u>	<u>Federal</u>	<u>Total</u>
1430 Homebound Instruction				
100 Personnel Services – Salaries				
100 Personnel Services – Salaries	1,529.00	7,439.78		8,968.78
Total Personnel Services – Salaries	\$1,529.00	\$7,439.78		\$8,968.78
200 Personnel Services – Employee Benefits				
220 Social Security Contributions	115.52	553.88		669.40
230 PSERS Retirement Contributions	511.14	2,458.94		2,970.08
260 Workers’ Compensation	7.66	37.21		44.87
Total Personnel Services – Employee Benefits	\$634.32	\$3,050.03		\$3,684.35
500 Other Purchased Services				
530 Communications		64.47		64.47
580 Travel	565.97	486.06		1,052.03
Total Other Purchased Services	\$565.97	\$550.53		\$1,116.50
Total 1430 Homebound Instruction	\$2,729.29	\$11,040.34		\$13,769.63

General Fund (10)

1440 Alternative Regular Education Programs

100 Personnel Services – Salaries

	<u>Elementary</u>	<u>Secondary</u>	<u>Federal</u>	<u>Total</u>
100 Personnel Services – Salaries		25,778.65		25,778.65
Total Personnel Services – Salaries		\$25,778.65		\$25,778.65

200 Personnel Services – Employee Benefits

210 Group Insurance – Contracted Provider		333.89		333.89
220 Social Security Contributions		1,963.93		1,963.93
230 PSERS Retirement Contributions		8,617.86		8,617.86
260 Workers' Compensation		128.65		128.65
270 Group Insurance – Self-Insurance		1,002.00		1,002.00
Total Personnel Services – Employee Benefits		\$12,046.33		\$12,046.33

300 Purchased Professional and Technical Services

322 Professional Educational Services – lus		329.50		329.50
330 Other Professional Services		4,693.28		4,693.28
Total Purchased Professional and Technical Services		\$5,022.78		\$5,022.78

500 Other Purchased Services

561 Tuition To Other School Districts Within the State		123,900.56		123,900.56
563 Tuition To Nonpublic Schools	5,139.12	70,629.58		75,768.70
566 Tuition To Institutions of Higher Education and Technical Institutes		5,850.00		5,850.00
569 Tuition – Other		7,600.00		7,600.00
Total Other Purchased Services	\$5,139.12	\$207,980.14		\$213,119.26
Total 1440 Alternative Regular Education Programs	\$5,139.12	\$250,827.90		\$255,967.02

General Fund (10)

1442 Alternative Education Programs

100 Personnel Services – Salaries

100 Personnel Services – Salaries

Total Personnel Services – Salaries

200 Personnel Services – Employee Benefits

210 Group Insurance – Contracted Provider

220 Social Security Contributions

230 PSERS Retirement Contributions

260 Workers' Compensation

270 Group Insurance – Self-Insurance

Total Personnel Services – Employee Benefits

300 Purchased Professional and Technical Services

322 Professional Educational Services – lus

330 Other Professional Services

Total Purchased Professional and Technical Services

500 Other Purchased Services

561 Tuition To Other School Districts Within the State

563 Tuition To Nonpublic Schools

566 Tuition To Institutions of Higher Education and Technical Institutes

569 Tuition – Other

Total Other Purchased Services

Total 1442 Alternative Education Programs

	<u>Elementary</u>	<u>Secondary</u>	<u>Federal</u>	<u>Total</u>
		25,778.65		25,778.65
Total Personnel Services – Salaries		\$25,778.65		\$25,778.65
		333.89		333.89
		1,963.93		1,963.93
		8,617.86		8,617.86
		128.65		128.65
		1,002.00		1,002.00
Total Personnel Services – Employee Benefits		\$12,046.33		\$12,046.33
		329.50		329.50
		4,693.28		4,693.28
Total Purchased Professional and Technical Services		\$5,022.78		\$5,022.78
		123,900.56		123,900.56
	5,139.12	70,629.58		75,768.70
		5,850.00		5,850.00
		7,600.00		7,600.00
Total Other Purchased Services	\$5,139.12	\$207,980.14		\$213,119.26
Total 1442 Alternative Education Programs	\$5,139.12	\$250,827.90		\$255,967.02

LEA : 114060753 Boyertown Area SD

Printed 1/3/2020 3:34:02 PM

General Fund (10)

1500 Nonpublic School Programs

Elementary

Secondary

Federal

Total

300 Purchased Professional and Technical Services

322 Professional Educational Services – lus

896.94

896.94

Total Purchased Professional and Technical Services

\$896.94

\$896.94

Total 1500 Nonpublic School Programs

\$896.94

\$896.94

LEA : 114060753 Boyertown Area SD

Printed 1/3/2020 3:34:02 PM

General Fund (10)

1600 Adult Education Programs

Elementary

Secondary

Federal

Total

300 Purchased Professional and Technical Services

329 Professional Educational Services – Other

198.00

Total Purchased Professional and Technical Services

\$198.00

Total 1600 Adult Education Programs

\$198.00

General Fund (10)

1800 Pre-Kindergarten

	<u>Elementary</u>	<u>Secondary</u>	<u>Federal</u>	<u>Total</u>
100 Personnel Services – Salaries				
100 Personnel Services – Salaries				95,054.25
Total Personnel Services – Salaries				\$95,054.25
200 Personnel Services – Employee Benefits				
210 Group Insurance – Contracted Provider				190.64
220 Social Security Contributions				7,181.66
230 PSERS Retirement Contributions				35,494.68
260 Workers' Compensation				475.34
270 Group Insurance – Self-Insurance				19,840.08
Total Personnel Services – Employee Benefits				\$63,182.40
300 Purchased Professional and Technical Services				
330 Other Professional Services				12,850.00
Total Purchased Professional and Technical Services				\$12,850.00
400 Purchased Property Services				
430 Repairs and Maintenance Services				5,251.00
Total Purchased Property Services				\$5,251.00
500 Other Purchased Services				
580 Travel				2,500.00
Total Other Purchased Services				\$2,500.00
600 Supplies				
610 General Supplies				29,140.12
630 Food				17,196.36
640 Books and Periodicals				164.04
Total Supplies				\$46,500.52
Total 1800 Pre-Kindergarten				\$225,338.17

General Fund (10)

1801 Pre-K Instruction

Elementary Secondary Federal Total

100 Personnel Services – Salaries				
100 Personnel Services – Salaries				95,054.25
Total Personnel Services – Salaries				\$95,054.25
200 Personnel Services – Employee Benefits				
210 Group Insurance – Contracted Provider				190.64
220 Social Security Contributions				7,181.66
230 PSERS Retirement Contributions				35,494.68
260 Workers' Compensation				475.34
270 Group Insurance – Self-Insurance				19,840.08
Total Personnel Services – Employee Benefits				\$63,182.40
300 Purchased Professional and Technical Services				
330 Other Professional Services				12,850.00
Total Purchased Professional and Technical Services				\$12,850.00
400 Purchased Property Services				
430 Repairs and Maintenance Services				5,251.00
Total Purchased Property Services				\$5,251.00
500 Other Purchased Services				
580 Travel				2,500.00
Total Other Purchased Services				\$2,500.00
600 Supplies				
610 General Supplies				29,140.12
630 Food				17,196.36
640 Books and Periodicals				164.04
Total Supplies				\$46,500.52
Total 1801 Pre-K Instruction				\$225,338.17

General Fund (10)

2000 Support Services

Total

100 Personnel Services – Salaries

100 Personnel Services – Salaries 13,491,117.96

Total Personnel Services – Salaries \$13,491,117.96

200 Personnel Services – Employee Benefits

210 Group Insurance – Contracted Provider 71,652.85

220 Social Security Contributions 1,001,601.21

230 PSERS Retirement Contributions 4,346,692.02

240 Tuition Reimbursement 132,589.00

250 Unemployment Compensation 3,336.12

260 Workers' Compensation 66,043.99

270 Group Insurance – Self-Insurance 2,596,261.44

291 Other Retirement Plans 15,455.00

299 All Other Employee Benefits 33,912.70

Total Personnel Services – Employee Benefits \$8,267,544.33

300 Purchased Professional and Technical Services

310 Official / Administrative Services 165,124.16

322 Professional Educational Services – Ius 26,984.85

329 Professional Educational Services – Other 57,838.03

330 Other Professional Services 512,313.63

340 Technical Services 66,146.43

350 Security / Safety Services 52,712.43

Total Purchased Professional and Technical Services \$881,119.53

400 Purchased Property Services

410 Cleaning Services 61,760.62

420 Utility Services 141,345.53

430 Repairs and Maintenance Services 213,293.10

440 Rentals 186,271.71

Total Purchased Property Services \$602,670.96

500 Other Purchased Services

513 Contracted Carriers 5,777,523.41

516 Student Transportation Services From the IU 8,345.73

520 Insurance – General 207,939.00

522 Automotive Liability Insurance 20,405.50

530 Communications 442,056.31

549 Other Advertising/Public Relations 4,555.51

550 Printing and Binding 6,169.97

580 Travel 62,249.50

595 IU Payments By Withholding 100,359.21

599 Other Miscellaneous Purchased Services 71.00

Total Other Purchased Services \$6,629,675.14

600 Supplies

610 General Supplies 634,315.12

620 Energy 1,056,833.74

640 Books and Periodicals 434,831.07

LEA : 114060753 Boyertown Area SD

Printed 1/3/2020 3:34:13 PM

General Fund (10)

2000 Support Services

Total

600 Supplies

650 Supplies & Fees – Technology Related 1,045,435.42

Total Supplies \$3,171,415.35

700 Property

752 Capital Equipment – Original and Additional 43,213.97

756 Capitalized Technology Equipment – Original 90.36

762 Capitalized Equipment - Replacement 1,247.00

Total Property \$44,551.33

800 Other Objects

810 Dues and Fees 48,730.14

890 Miscellaneous Expenditures 90.70

Total Other Objects \$48,820.84

Total 2000 Support Services \$33,136,915.44

General Fund (10)

	<u>Elementary</u>	<u>Secondary</u>	<u>Federal</u>	<u>Total</u>
2100 Support Services – Students				
100 Personnel Services – Salaries				
100 Personnel Services – Salaries	722,470.25	1,320,422.00		2,127,983.14
Total Personnel Services – Salaries	\$722,470.25	\$1,320,422.00		\$2,127,983.14
200 Personnel Services – Employee Benefits				
210 Group Insurance – Contracted Provider	1,544.02	3,083.67		5,314.09
220 Social Security Contributions	53,097.19	98,449.52		157,790.86
230 PSERS Retirement Contributions	241,513.29	438,326.16		708,285.33
260 Workers' Compensation	3,612.76	6,556.26		10,587.65
270 Group Insurance – Self-Insurance	146,373.64	211,226.96		393,176.21
Total Personnel Services – Employee Benefits	\$446,140.90	\$757,642.57		\$1,275,154.14
300 Purchased Professional and Technical Services				
322 Professional Educational Services – lus	5,754.76	5,198.35		10,953.11
330 Other Professional Services	15,926.45	14,386.55		30,313.00
340 Technical Services				8,000.40
Total Purchased Professional and Technical Services	\$21,681.21	\$19,584.90		\$49,266.51
400 Purchased Property Services				
440 Rentals		1,490.10		1,490.10
Total Purchased Property Services		\$1,490.10		\$1,490.10
500 Other Purchased Services				
530 Communications	411.24	371.48		791.50
580 Travel	1,763.11	1,936.97		4,731.36
Total Other Purchased Services	\$2,174.35	\$2,308.45		\$5,522.86
600 Supplies				
610 General Supplies	19,802.33	4,950.73		24,822.25
640 Books and Periodicals	878.57	5,852.58		6,731.15
Total Supplies	\$20,680.90	\$10,803.31		\$31,553.40
800 Other Objects				
810 Dues and Fees	885.30	799.70		1,685.00
Total Other Objects	\$885.30	\$799.70		\$1,685.00
Total 2100 Support Services – Students	\$1,214,032.91	\$2,113,051.03		\$3,492,655.15

General Fund (10)

	<u>Elementary</u>	<u>Secondary</u>	<u>Federal</u>	<u>Total</u>
2110 Supervision of Student Services				
100 Personnel Services – Salaries				
100 Personnel Services – Salaries	90,322.06	81,588.98		171,911.04
Total Personnel Services – Salaries	\$90,322.06	\$81,588.98		\$171,911.04
200 Personnel Services – Employee Benefits				
210 Group Insurance – Contracted Provider	200.32	180.96		381.28
220 Social Security Contributions	6,709.32	6,060.61		12,769.93
230 PSERS Retirement Contributions	30,165.65	27,248.98		57,414.63
260 Workers' Compensation	451.55	407.88		859.43
270 Group Insurance – Self-Insurance	20,849.27	18,833.38		39,682.65
Total Personnel Services – Employee Benefits	\$58,376.11	\$52,731.81		\$111,107.92
300 Purchased Professional and Technical Services				
322 Professional Educational Services – lus	3,018.48	2,726.63		5,745.11
330 Other Professional Services	15,926.45	14,386.55		30,313.00
Total Purchased Professional and Technical Services	\$18,944.93	\$17,113.18		\$36,058.11
500 Other Purchased Services				
530 Communications	411.24	371.48		782.72
580 Travel	262.51	237.14		499.65
Total Other Purchased Services	\$673.75	\$608.62		\$1,282.37
600 Supplies				
610 General Supplies	16,492.76	596.31		17,089.07
Total Supplies	\$16,492.76	\$596.31		\$17,089.07
800 Other Objects				
810 Dues and Fees	885.30	799.70		1,685.00
Total Other Objects	\$885.30	\$799.70		\$1,685.00
Total 2110 Supervision of Student Services	\$185,694.91	\$153,438.60		\$339,133.51

General Fund (10)

	<u>Elementary</u>	<u>Secondary</u>	<u>Federal</u>	<u>Total</u>
2119 Supervision of Student Services – All Other Supervision				
100 Personnel Services – Salaries				
100 Personnel Services – Salaries	90,322.06	81,588.98		171,911.04
Total Personnel Services – Salaries	\$90,322.06	\$81,588.98		\$171,911.04
200 Personnel Services – Employee Benefits				
210 Group Insurance – Contracted Provider	200.32	180.96		381.28
220 Social Security Contributions	6,709.32	6,060.61		12,769.93
230 PSERS Retirement Contributions	30,165.65	27,248.98		57,414.63
260 Workers' Compensation	451.55	407.88		859.43
270 Group Insurance – Self-Insurance	20,849.27	18,833.38		39,682.65
Total Personnel Services – Employee Benefits	\$58,376.11	\$52,731.81		\$111,107.92
300 Purchased Professional and Technical Services				
322 Professional Educational Services – lus	3,018.48	2,726.63		5,745.11
330 Other Professional Services	15,926.45	14,386.55		30,313.00
Total Purchased Professional and Technical Services	\$18,944.93	\$17,113.18		\$36,058.11
500 Other Purchased Services				
530 Communications	411.24	371.48		782.72
580 Travel	262.51	237.14		499.65
Total Other Purchased Services	\$673.75	\$608.62		\$1,282.37
600 Supplies				
610 General Supplies	16,492.76	596.31		17,089.07
Total Supplies	\$16,492.76	\$596.31		\$17,089.07
800 Other Objects				
810 Dues and Fees	885.30	799.70		1,685.00
Total Other Objects	\$885.30	\$799.70		\$1,685.00
Total 2119 Supervision of Student Services – All Other Supervision	\$185,694.91	\$153,438.60		\$339,133.51

General Fund (10)

2120 Guidance Services

	<u>Elementary</u>	<u>Secondary</u>	<u>Federal</u>	<u>Total</u>
100 Personnel Services – Salaries				
100 Personnel Services – Salaries	410,579.24	1,038,687.18		1,449,266.42
Total Personnel Services – Salaries	\$410,579.24	\$1,038,687.18		\$1,449,266.42
200 Personnel Services – Employee Benefits				
210 Group Insurance – Contracted Provider	853.14	2,459.59		3,312.73
220 Social Security Contributions	30,175.47	77,744.06		107,919.53
230 PSERS Retirement Contributions	137,277.11	344,168.40		481,445.51
260 Workers' Compensation	2,053.18	5,147.48		7,200.66
270 Group Insurance – Self-Insurance	83,037.25	154,014.47		237,051.72
Total Personnel Services – Employee Benefits	\$253,396.15	\$583,534.00		\$836,930.15
400 Purchased Property Services				
440 Rentals		1,490.10		1,490.10
Total Purchased Property Services		\$1,490.10		\$1,490.10
500 Other Purchased Services				
580 Travel	244.31	565.01		809.32
Total Other Purchased Services	\$244.31	\$565.01		\$809.32
600 Supplies				
610 General Supplies	483.34	1,801.46		2,284.80
640 Books and Periodicals	156.15	5,200.00		5,356.15
Total Supplies	\$639.49	\$7,001.46		\$7,640.95
Total 2120 Guidance Services	\$664,859.19	\$1,631,277.75		\$2,296,136.94

LEA : 114060753 Boyertown Area SD

Printed 1/3/2020 3:34:13 PM

General Fund (10)

	<u>Elementary</u>	<u>Secondary</u>	<u>Federal</u>	<u>Total</u>
2140 Psychological Services				
100 Personnel Services – Salaries				
100 Personnel Services – Salaries	221,568.95	200,145.84		421,714.79
Total Personnel Services – Salaries	\$221,568.95	\$200,145.84		\$421,714.79
200 Personnel Services – Employee Benefits				
210 Group Insurance – Contracted Provider	490.56	443.12		933.68
220 Social Security Contributions	16,212.40	14,644.85		30,857.25
230 PSERS Retirement Contributions	74,070.53	66,908.78		140,979.31
260 Workers' Compensation	1,108.03	1,000.90		2,108.93
270 Group Insurance – Self-Insurance	42,487.12	38,379.11		80,866.23
Total Personnel Services – Employee Benefits	\$134,368.64	\$121,376.76		\$255,745.40
300 Purchased Professional and Technical Services				
322 Professional Educational Services – lus	2,736.28	2,471.72		5,208.00
Total Purchased Professional and Technical Services	\$2,736.28	\$2,471.72		\$5,208.00
500 Other Purchased Services				
580 Travel	1,256.29	1,134.82		2,391.11
Total Other Purchased Services	\$1,256.29	\$1,134.82		\$2,391.11
600 Supplies				
610 General Supplies	2,826.23	2,552.96		5,379.19
640 Books and Periodicals	722.42	652.58		1,375.00
Total Supplies	\$3,548.65	\$3,205.54		\$6,754.19
Total 2140 Psychological Services	\$363,478.81	\$328,334.68		\$691,813.49

General Fund (10)

2170 Student Accounting Services

Elementary

Secondary

Federal

Total

100 Personnel Services – Salaries

100 Personnel Services – Salaries

85,090.89

Total Personnel Services – Salaries

\$85,090.89

200 Personnel Services – Employee Benefits

210 Group Insurance – Contracted Provider

686.40

220 Social Security Contributions

6,244.15

230 PSERS Retirement Contributions

28,445.88

260 Workers' Compensation

418.63

270 Group Insurance – Self-Insurance

35,575.61

Total Personnel Services – Employee Benefits

\$71,370.67

300 Purchased Professional and Technical Services

340 Technical Services

8,000.40

Total Purchased Professional and Technical Services

\$8,000.40

500 Other Purchased Services

530 Communications

8.78

580 Travel

1,031.28

Total Other Purchased Services

\$1,040.06

600 Supplies

610 General Supplies

69.19

Total Supplies

\$69.19

Total 2170 Student Accounting Services

\$165,571.21

General Fund (10)

2200 Support Services – Instructional Staff

	<u>Elementary</u>	<u>Secondary</u>	<u>Federal</u>	<u>Total</u>
100 Personnel Services – Salaries				
100 Personnel Services – Salaries	1,500,246.41	1,020,011.23		2,520,257.64
Total Personnel Services – Salaries	\$1,500,246.41	\$1,020,011.23		\$2,520,257.64
200 Personnel Services – Employee Benefits				
210 Group Insurance – Contracted Provider	5,118.32	3,298.45		8,416.77
220 Social Security Contributions	111,956.56	75,964.06		187,920.62
230 PSERS Retirement Contributions	473,360.41	339,534.59		812,895.00
240 Tuition Reimbursement	76,650.58	55,938.42		132,589.00
260 Workers' Compensation	7,472.96	5,086.99		12,559.95
270 Group Insurance – Self-Insurance	254,628.83	156,794.59		411,423.42
Total Personnel Services – Employee Benefits	\$929,187.66	\$636,617.10		\$1,565,804.76
300 Purchased Professional and Technical Services				
322 Professional Educational Services – Ius			15,111.46	15,111.46
329 Professional Educational Services – Other	27,420.64	24,769.39		52,190.03
330 Other Professional Services	3,596.03	2,515.38		6,111.41
Total Purchased Professional and Technical Services	\$31,016.67	\$27,284.77	\$15,111.46	\$73,412.90
400 Purchased Property Services				
430 Repairs and Maintenance Services	1,421.08	1,010.71		2,431.79
440 Rentals	51,575.61	58,802.82		110,378.43
Total Purchased Property Services	\$52,996.69	\$59,813.53		\$112,810.22
500 Other Purchased Services				
530 Communications	84.20	91.60		175.80
550 Printing and Binding	48.26			48.26
580 Travel	13,935.76	17,475.42	2,502.39	33,913.57
599 Other Miscellaneous Purchased Services	37.30	33.70		71.00
Total Other Purchased Services	\$14,105.52	\$17,600.72	\$2,502.39	\$34,208.63
600 Supplies				
610 General Supplies	72,607.03	100,587.81		173,194.84
640 Books and Periodicals	124,040.33	302,618.49		426,658.82
650 Supplies & Fees – Technology Related	25,922.19	22,424.53		48,346.72
Total Supplies	\$222,569.55	\$425,630.83		\$648,200.38
700 Property				
752 Capital Equipment – Original and Additional	(9.76)	15,762.65		15,752.89
756 Capitalized Technology Equipment– Original	47.48	42.88		90.36
Total Property	\$37.72	\$15,805.53		\$15,843.25
800 Other Objects				
810 Dues and Fees	252.19	227.81		480.00
Total Other Objects	\$252.19	\$227.81		\$480.00
Total 2200 Support Services – Instructional Staff	\$2,750,412.41	\$2,202,991.52	\$17,613.85	\$4,971,017.78

LEA : 114060753 Boyertown Area SD

Printed 1/3/2020 3:34:13 PM

General Fund (10)

	<u>Elementary</u>	<u>Secondary</u>	<u>Federal</u>	<u>Total</u>
2210 Supervision of Educational Media Services				
400 <u>Purchased Property Services</u>				
430 Repairs and Maintenance Services	1,421.08	1,010.71		2,431.79
440 Rentals	51,575.61	58,802.82		110,378.43
Total Purchased Property Services	\$52,996.69	\$59,813.53		\$112,810.22
600 <u>Supplies</u>				
610 General Supplies	38,241.27	66,277.52		104,518.79
640 Books and Periodicals	4,669.16	2,013.48		6,682.64
650 Supplies & Fees – Technology Related	17,599.01	14,276.39		31,875.40
Total Supplies	\$60,509.44	\$82,567.39		\$143,076.83
700 <u>Property</u>				
752 Capital Equipment – Original and Additional	(9.76)			(9.76)
Total Property	(\$9.76)			(\$9.76)
Total 2210 Supervision of Educational Media Services	\$113,496.37	\$142,380.92		\$255,877.29

General Fund (10)

2219 Supervision of Educational Media Services – All Other Supervision

	<u>Elementary</u>	<u>Secondary</u>	<u>Federal</u>	<u>Total</u>
400 <u>Purchased Property Services</u>				
430 Repairs and Maintenance Services	1,421.08	1,010.71		2,431.79
440 Rentals	51,575.61	58,802.82		110,378.43
Total Purchased Property Services	\$52,996.69	\$59,813.53		\$112,810.22
600 <u>Supplies</u>				
610 General Supplies	38,241.27	66,277.52		104,518.79
640 Books and Periodicals	4,669.16	2,013.48		6,682.64
650 Supplies & Fees – Technology Related	17,599.01	14,276.39		31,875.40
Total Supplies	\$60,509.44	\$82,567.39		\$143,076.83
700 <u>Property</u>				
752 Capital Equipment – Original and Additional	(9.76)			(9.76)
Total Property	(\$9.76)			(\$9.76)
Total 2219 Supervision of Educational Media Services – All Other Supervision	\$113,496.37	\$142,380.92		\$255,877.29

General Fund (10)

	<u>Elementary</u>	<u>Secondary</u>	<u>Federal</u>	<u>Total</u>
2250 School Library Services				
100 Personnel Services – Salaries				
100 Personnel Services – Salaries	503,361.16	268,456.53		771,817.69
Total Personnel Services – Salaries	\$503,361.16	\$268,456.53		\$771,817.69
200 Personnel Services – Employee Benefits				
210 Group Insurance – Contracted Provider	2,049.17	677.26		2,726.43
220 Social Security Contributions	37,332.76	19,577.16		56,909.92
230 PSERS Retirement Contributions	166,324.31	89,494.45		255,818.76
260 Workers' Compensation	2,502.82	1,342.29		3,845.11
270 Group Insurance – Self-Insurance	107,145.48	51,855.52		159,001.00
Total Personnel Services – Employee Benefits	\$315,354.54	\$162,946.68		\$478,301.22
600 Supplies				
610 General Supplies	1,571.84	3,601.83		5,173.67
640 Books and Periodicals	20,710.12	36,326.79		57,036.91
650 Supplies & Fees – Technology Related	329.00			329.00
Total Supplies	\$22,610.96	\$39,928.62		\$62,539.58
Total 2250 School Library Services	\$841,326.66	\$471,331.83		\$1,312,658.49

General Fund (10)

	<u>Elementary</u>	<u>Secondary</u>	<u>Federal</u>	<u>Total</u>
2260 Instruction and Curriculum Development Services				
100 Personnel Services – Salaries				
100 Personnel Services – Salaries	486,579.37	406,307.99		892,887.36
Total Personnel Services – Salaries	\$486,579.37	\$406,307.99		\$892,887.36
200 Personnel Services – Employee Benefits				
210 Group Insurance – Contracted Provider	1,852.05	1,601.83		3,453.88
220 Social Security Contributions	36,413.46	30,477.50		66,890.96
230 PSERS Retirement Contributions	161,900.95	135,139.93		297,040.88
260 Workers' Compensation	2,424.73	2,024.11		4,448.84
270 Group Insurance – Self-Insurance	83,091.70	67,704.25		150,795.95
Total Personnel Services – Employee Benefits	\$285,682.89	\$236,947.62		\$522,630.51
300 Purchased Professional and Technical Services				
329 Professional Educational Services – Other	22,659.45	20,468.55		43,128.00
330 Other Professional Services	3,596.03	2,515.38		6,111.41
Total Purchased Professional and Technical Services	\$26,255.48	\$22,983.93		\$49,239.41
500 Other Purchased Services				
530 Communications	22.44	35.82		58.26
550 Printing and Binding	48.26			48.26
580 Travel	3,377.72	3,051.13		6,428.85
Total Other Purchased Services	\$3,448.42	\$3,086.95		\$6,535.37
600 Supplies				
610 General Supplies	31,136.77	29,211.52		60,348.29
640 Books and Periodicals	96,508.06	261,765.89		358,273.95
650 Supplies & Fees – Technology Related	1,129.22	1,946.94		3,076.16
Total Supplies	\$128,774.05	\$292,924.35		\$421,698.40
700 Property				
752 Capital Equipment – Original and Additional		15,762.65		15,762.65
756 Capitalized Technology Equipment – Original	47.48	42.88		90.36
Total Property	\$47.48	\$15,805.53		\$15,853.01
800 Other Objects				
810 Dues and Fees	252.19	227.81		480.00
Total Other Objects	\$252.19	\$227.81		\$480.00
Total 2260 Instruction and Curriculum Development Services	\$931,039.88	\$978,284.18		\$1,909,324.06

General Fund (10)

	<u>Elementary</u>	<u>Secondary</u>	<u>Federal</u>	<u>Total</u>
2270 Instructional Staff Professional Development Services				
100 Personnel Services – Salaries				
100 Personnel Services – Salaries	368,961.50	345,246.71		714,208.21
Total Personnel Services – Salaries	\$368,961.50	\$345,246.71		\$714,208.21
200 Personnel Services – Employee Benefits				
210 Group Insurance – Contracted Provider	1,217.10	1,019.36		2,236.46
220 Social Security Contributions	27,397.19	25,909.40		53,306.59
230 PSERS Retirement Contributions	122,773.06	114,900.21		237,673.27
240 Tuition Reimbursement	76,650.58	55,938.42		132,589.00
260 Workers' Compensation	1,838.59	1,720.59		3,559.18
270 Group Insurance – Self-Insurance	64,391.65	37,234.82		101,626.47
Total Personnel Services – Employee Benefits	\$294,268.17	\$236,722.80		\$530,990.97
300 Purchased Professional and Technical Services				
329 Professional Educational Services – Other	4,761.19	4,300.84		9,062.03
Total Purchased Professional and Technical Services	\$4,761.19	\$4,300.84		\$9,062.03
500 Other Purchased Services				
530 Communications	61.76	55.78		117.54
580 Travel	10,558.04	14,424.29	2,502.39	27,484.72
599 Other Miscellaneous Purchased Services	37.30	33.70		71.00
Total Other Purchased Services	\$10,657.10	\$14,513.77	\$2,502.39	\$27,673.26
600 Supplies				
610 General Supplies	1,657.15	1,496.94		3,154.09
640 Books and Periodicals	2,152.99	2,512.33		4,665.32
650 Supplies & Fees – Technology Related	6,864.96	6,201.20		13,066.16
Total Supplies	\$10,675.10	\$10,210.47		\$20,885.57
Total 2270 Instructional Staff Professional Development Services	\$689,323.06	\$610,994.59	\$2,502.39	\$1,302,820.04

General Fund (10)

2280 Nonpublic Support Services

300 Purchased Professional and Technical Services

322 Professional Educational Services – lus

Total Purchased Professional and Technical Services

Total 2280 Nonpublic Support Services

Elementary

Secondary

Federal

Total

15,111.46

15,111.46

\$15,111.46

\$15,111.46

\$15,111.46

\$15,111.46

General Fund (10)

	<u>Elementary</u>	<u>Secondary</u>	<u>Federal</u>	<u>Total</u>
2290 Other Instructional Staff Services				
100 Personnel Services – Salaries				
100 Personnel Services – Salaries	141,344.38			141,344.38
Total Personnel Services – Salaries	\$141,344.38			\$141,344.38
200 Personnel Services – Employee Benefits				
220 Social Security Contributions	10,813.15			10,813.15
230 PSERS Retirement Contributions	22,362.09			22,362.09
260 Workers’ Compensation	706.82			706.82
Total Personnel Services – Employee Benefits	\$33,882.06			\$33,882.06
Total 2290 Other Instructional Staff Services	\$175,226.44			\$175,226.44

General Fund (10)

	<u>Elementary</u>	<u>Secondary</u>	<u>Federal</u>	<u>Total</u>
2300 Support Services – Administration				
100 Personnel Services – Salaries				
100 Personnel Services – Salaries	1,312,876.03	1,369,167.50		3,385,984.93
Total Personnel Services – Salaries	\$1,312,876.03	\$1,369,167.50		\$3,385,984.93
200 Personnel Services – Employee Benefits				
210 Group Insurance – Contracted Provider	8,328.22	10,527.14		23,585.20
220 Social Security Contributions	97,730.77	99,143.28		248,092.69
230 PSERS Retirement Contributions	421,417.92	434,431.35		1,042,034.20
260 Workers' Compensation	6,460.69	6,699.03		16,139.18
270 Group Insurance – Self-Insurance	177,950.90	275,647.09		491,363.87
291 Other Retirement Plans		15,455.00		15,455.00
299 All Other Employee Benefits				10,166.70
Total Personnel Services – Employee Benefits	\$711,888.50	\$841,902.89		\$1,846,836.84
300 Purchased Professional and Technical Services				
310 Official / Administrative Services	13,300.00			165,124.16
322 Professional Educational Services – Ius				900.00
329 Professional Educational Services – Other				1,699.00
330 Other Professional Services				415,421.51
340 Technical Services				58,146.03
350 Security / Safety Services				460.00
Total Purchased Professional and Technical Services	\$13,300.00			\$641,750.70
400 Purchased Property Services				
440 Rentals				1,646.64
Total Purchased Property Services				\$1,646.64
500 Other Purchased Services				
520 Insurance – General				83,053.25
530 Communications	66.20	59.79		36,190.68
549 Other Advertising/Public Relations				3,951.11
550 Printing and Binding				6,121.71
580 Travel	468.00	350.97		9,744.40
Total Other Purchased Services	\$534.20	\$410.76		\$139,061.15
600 Supplies				
610 General Supplies	796.90	747.55		8,715.93
640 Books and Periodicals	73.08			554.58
650 Supplies & Fees – Technology Related				2,312.80
Total Supplies	\$869.98	\$747.55		\$11,583.31
800 Other Objects				
810 Dues and Fees	2,642.70	2,617.30		38,024.75
Total Other Objects	\$2,642.70	\$2,617.30		\$38,024.75
Total 2300 Support Services – Administration	\$2,042,111.41	\$2,214,846.00		\$6,064,888.32

General Fund (10)

	<u>Elementary</u>	<u>Secondary</u>	<u>Federal</u>	<u>Total</u>
2310 Board Services				
100 Personnel Services – Salaries				
100 Personnel Services – Salaries				3,978.18
Total Personnel Services – Salaries				\$3,978.18
200 Personnel Services – Employee Benefits				
220 Social Security Contributions				245.22
230 PSERS Retirement Contributions				1,075.01
260 Workers' Compensation				15.65
Total Personnel Services – Employee Benefits				\$1,335.88
300 Purchased Professional and Technical Services				
330 Other Professional Services				12,202.13
350 Security / Safety Services				460.00
Total Purchased Professional and Technical Services				\$12,662.13
500 Other Purchased Services				
520 Insurance – General				74,161.00
530 Communications				1,842.28
549 Other Advertising/Public Relations				3,951.11
580 Travel				2,881.66
Total Other Purchased Services				\$82,836.05
600 Supplies				
610 General Supplies				2,764.89
Total Supplies				\$2,764.89
800 Other Objects				
810 Dues and Fees				23,664.15
Total Other Objects				\$23,664.15
Total 2310 Board Services				\$127,241.28

General Fund (10)

2320 Board Treasurer Services

Elementary

Secondary

Federal

Total

100 Personnel Services – Salaries

100 Personnel Services – Salaries

800.00

Total Personnel Services – Salaries

\$800.00

200 Personnel Services – Employee Benefits

220 Social Security Contributions

59.09

230 PSERS Retirement Contributions

267.42

Total Personnel Services – Employee Benefits

\$326.51

Total 2320 Board Treasurer Services

\$1,126.51

General Fund (10)

	<u>Elementary</u>	<u>Secondary</u>	<u>Federal</u>	<u>Total</u>
2330 Tax Assessment and Collection Services				
100 Personnel Services – Salaries				
100 Personnel Services – Salaries				86,159.85
Total Personnel Services – Salaries				\$86,159.85
200 Personnel Services – Employee Benefits				
220 Social Security Contributions				6,591.17
Total Personnel Services – Employee Benefits				\$6,591.17
300 Purchased Professional and Technical Services				
310 Official / Administrative Services				151,824.16
330 Other Professional Services				70,584.76
340 Technical Services				58,146.03
Total Purchased Professional and Technical Services				\$280,554.95
500 Other Purchased Services				
520 Insurance – General				8,892.25
530 Communications				29,836.28
Total Other Purchased Services				\$38,728.53
600 Supplies				
610 General Supplies				1,437.59
650 Supplies & Fees – Technology Related				700.00
Total Supplies				\$2,137.59
Total 2330 Tax Assessment and Collection Services				\$414,172.09

General Fund (10)

2350 Legal and Accounting Services

Elementary

Secondary

Federal

Total

300 Purchased Professional and Technical Services

330 Other Professional Services

242,923.62

Total Purchased Professional and Technical Services

\$242,923.62

Total 2350 Legal and Accounting Services

\$242,923.62

General Fund (10)

	<u>Elementary</u>	<u>Secondary</u>	<u>Federal</u>	<u>Total</u>
2360 Office of the Superintendent / Executive Director Services				
100 Personnel Services – Salaries				
100 Personnel Services – Salaries				613,003.37
Total Personnel Services – Salaries				\$613,003.37
200 Personnel Services – Employee Benefits				
210 Group Insurance – Contracted Provider				4,729.84
220 Social Security Contributions				44,323.16
230 PSERS Retirement Contributions				184,842.50
260 Workers' Compensation				2,963.81
270 Group Insurance – Self-Insurance				37,765.88
299 All Other Employee Benefits				10,166.70
Total Personnel Services – Employee Benefits				\$284,791.89
300 Purchased Professional and Technical Services				
322 Professional Educational Services – Ius				900.00
329 Professional Educational Services – Other				1,699.00
330 Other Professional Services				51,075.00
Total Purchased Professional and Technical Services				\$53,674.00
400 Purchased Property Services				
440 Rentals				1,646.64
Total Purchased Property Services				\$1,646.64
500 Other Purchased Services				
530 Communications	66.20	59.79		125.99
580 Travel				6,043.77
Total Other Purchased Services	\$66.20	\$59.79		\$6,169.76
600 Supplies				
610 General Supplies				2,969.00
640 Books and Periodicals				481.50
650 Supplies & Fees – Technology Related				1,612.80
Total Supplies				\$5,063.30
800 Other Objects				
810 Dues and Fees				9,100.60
Total Other Objects				\$9,100.60
Total 2360 Office of the Superintendent / Executive Director Services	\$66.20	\$59.79		\$973,449.56

General Fund (10)

2370 Community Relations Services

Elementary

Secondary

Federal

Total

300 Purchased Professional and Technical Services

330 Other Professional Services

38,636.00

Total Purchased Professional and Technical Services

\$38,636.00

500 Other Purchased Services

530 Communications

4,386.13

550 Printing and Binding

6,121.71

Total Other Purchased Services

\$10,507.84

Total 2370 Community Relations Services

\$49,143.84

General Fund (10)

	<u>Elementary</u>	<u>Secondary</u>	<u>Federal</u>	<u>Total</u>
2380 Office of the Principal Services				
100 Personnel Services – Salaries				
100 Personnel Services – Salaries	1,312,876.03	1,369,167.50		2,682,043.53
Total Personnel Services – Salaries	\$1,312,876.03	\$1,369,167.50		\$2,682,043.53
200 Personnel Services – Employee Benefits				
210 Group Insurance – Contracted Provider	8,328.22	10,527.14		18,855.36
220 Social Security Contributions	97,730.77	99,143.28		196,874.05
230 PSERS Retirement Contributions	421,417.92	434,431.35		855,849.27
260 Workers' Compensation	6,460.69	6,699.03		13,159.72
270 Group Insurance – Self-Insurance	177,950.90	275,647.09		453,597.99
291 Other Retirement Plans		15,455.00		15,455.00
Total Personnel Services – Employee Benefits	\$711,888.50	\$841,902.89		\$1,553,791.39
300 Purchased Professional and Technical Services				
310 Official / Administrative Services	13,300.00			13,300.00
Total Purchased Professional and Technical Services	\$13,300.00			\$13,300.00
500 Other Purchased Services				
580 Travel	468.00	350.97		818.97
Total Other Purchased Services	\$468.00	\$350.97		\$818.97
600 Supplies				
610 General Supplies	796.90	747.55		1,544.45
640 Books and Periodicals	73.08			73.08
Total Supplies	\$869.98	\$747.55		\$1,617.53
800 Other Objects				
810 Dues and Fees	2,642.70	2,617.30		5,260.00
Total Other Objects	\$2,642.70	\$2,617.30		\$5,260.00
Total 2380 Office of the Principal Services	\$2,042,045.21	\$2,214,786.21		\$4,256,831.42

General Fund (10)

	<u>Elementary</u>	<u>Secondary</u>	<u>Federal</u>	<u>Total</u>
2400 Support Services – Pupil Health				
100 Personnel Services – Salaries				
100 Personnel Services – Salaries			8,315.12	793,868.90
Total Personnel Services – Salaries			\$8,315.12	\$793,868.90
200 Personnel Services – Employee Benefits				
210 Group Insurance – Contracted Provider				962.56
220 Social Security Contributions			636.07	60,049.60
230 PSERS Retirement Contributions			1,333.65	252,883.17
260 Workers' Compensation			41.58	3,968.95
270 Group Insurance – Self-Insurance				62,242.38
Total Personnel Services – Employee Benefits			\$2,011.30	\$380,106.66
300 Purchased Professional and Technical Services				
330 Other Professional Services				7,565.00
Total Purchased Professional and Technical Services				\$7,565.00
400 Purchased Property Services				
430 Repairs and Maintenance Services				125.00
Total Purchased Property Services				\$125.00
500 Other Purchased Services				
580 Travel				191.05
Total Other Purchased Services				\$191.05
600 Supplies				
610 General Supplies				10,069.83
Total Supplies				\$10,069.83
Total 2400 Support Services – Pupil Health			\$10,326.42	\$1,191,926.44

General Fund (10)

2440 Nursing Services

100 Personnel Services – Salaries

	<u>Elementary</u>	<u>Secondary</u>	<u>Federal</u>	<u>Total</u>
100 Personnel Services – Salaries			8,315.12	793,868.90
Total Personnel Services – Salaries			\$8,315.12	\$793,868.90

200 Personnel Services – Employee Benefits

210 Group Insurance – Contracted Provider				962.56
220 Social Security Contributions			636.07	60,049.60
230 PSERS Retirement Contributions			1,333.65	252,883.17
260 Workers' Compensation			41.58	3,968.95
270 Group Insurance – Self-Insurance				62,242.38
Total Personnel Services – Employee Benefits			\$2,011.30	\$380,106.66

300 Purchased Professional and Technical Services

330 Other Professional Services				7,565.00
Total Purchased Professional and Technical Services				\$7,565.00

400 Purchased Property Services

430 Repairs and Maintenance Services				125.00
Total Purchased Property Services				\$125.00

500 Other Purchased Services

580 Travel				191.05
Total Other Purchased Services				\$191.05

600 Supplies

610 General Supplies				10,069.83
Total Supplies				\$10,069.83

Total 2440 Nursing Services			\$10,326.42	\$1,191,926.44
------------------------------------	--	--	--------------------	-----------------------

General Fund (10)

	<u>Elementary</u>	<u>Secondary</u>	<u>Federal</u>	<u>Total</u>
2500 Support Services – Business				
100 Personnel Services – Salaries				
100 Personnel Services – Salaries				562,889.48
Total Personnel Services – Salaries				\$562,889.48
200 Personnel Services – Employee Benefits				
210 Group Insurance – Contracted Provider				4,678.50
220 Social Security Contributions				42,123.01
230 PSERS Retirement Contributions				183,363.40
260 Workers' Compensation				2,760.95
270 Group Insurance – Self-Insurance				163,776.71
299 All Other Employee Benefits				3,000.00
Total Personnel Services – Employee Benefits				\$399,702.57
400 Purchased Property Services				
440 Rentals				65,303.26
Total Purchased Property Services				\$65,303.26
500 Other Purchased Services				
520 Insurance – General				124,885.75
530 Communications				17,000.78
580 Travel				1,559.72
Total Other Purchased Services				\$143,446.25
600 Supplies				
610 General Supplies				20,263.44
640 Books and Periodicals				129.99
650 Supplies & Fees – Technology Related				52,476.44
Total Supplies				\$72,869.87
800 Other Objects				
810 Dues and Fees				6,332.39
890 Miscellaneous Expenditures				90.70
Total Other Objects				\$6,423.09
Total 2500 Support Services – Business				\$1,250,634.52

LEA : 114060753 Boyertown Area SD

Printed 1/3/2020 3:34:13 PM

Page - 28 of 53

General Fund (10)**2510 Fiscal Services**ElementarySecondaryFederalTotal**100 Personnel Services – Salaries**

100 Personnel Services – Salaries

489,679.07

Total Personnel Services – Salaries**\$489,679.07****200 Personnel Services – Employee Benefits**

210 Group Insurance – Contracted Provider

4,029.34

220 Social Security Contributions

36,729.80

230 PSERS Retirement Contributions

158,889.22

260 Workers' Compensation

2,397.32

270 Group Insurance – Self-Insurance

139,549.74

299 All Other Employee Benefits

3,000.00

Total Personnel Services – Employee Benefits**\$344,595.42****400 Purchased Property Services**

440 Rentals

7,998.84

Total Purchased Property Services**\$7,998.84****500 Other Purchased Services**

520 Insurance – General

124,885.75

530 Communications

17,000.78

580 Travel

1,559.72

Total Other Purchased Services**\$143,446.25****600 Supplies**

610 General Supplies

11,697.12

640 Books and Periodicals

129.99

650 Supplies & Fees – Technology Related

52,476.44

Total Supplies**\$64,303.55****800 Other Objects**

810 Dues and Fees

6,332.39

890 Miscellaneous Expenditures

90.70

Total Other Objects**\$6,423.09****Total 2510 Fiscal Services****\$1,056,446.22**

General Fund (10)

	<u>Elementary</u>	<u>Secondary</u>	<u>Federal</u>	<u>Total</u>
2511 Supervision of Fiscal Services - Head of Component				
100 Personnel Services – Salaries				
100 Personnel Services – Salaries				48,543.13
Total Personnel Services – Salaries				\$48,543.13
200 Personnel Services – Employee Benefits				
210 Group Insurance – Contracted Provider				352.32
220 Social Security Contributions				3,745.01
230 PSERS Retirement Contributions				16,004.78
260 Workers' Compensation				240.17
270 Group Insurance – Self-Insurance				8,679.55
299 All Other Employee Benefits				750.00
Total Personnel Services – Employee Benefits				\$29,771.83
Total 2511 Supervision of Fiscal Services - Head of Component				\$78,314.96

General Fund (10)

	<u>Elementary</u>	<u>Secondary</u>	<u>Federal</u>	<u>Total</u>
2519 Other Fiscal Services				
100 Personnel Services – Salaries				
100 Personnel Services – Salaries				441,135.94
Total Personnel Services – Salaries				\$441,135.94
200 Personnel Services – Employee Benefits				
210 Group Insurance – Contracted Provider				3,677.02
220 Social Security Contributions				32,984.79
230 PSERS Retirement Contributions				142,884.44
260 Workers' Compensation				2,157.15
270 Group Insurance – Self-Insurance				130,870.19
299 All Other Employee Benefits				2,250.00
Total Personnel Services – Employee Benefits				\$314,823.59
400 Purchased Property Services				
440 Rentals				7,998.84
Total Purchased Property Services				\$7,998.84
500 Other Purchased Services				
520 Insurance – General				124,885.75
530 Communications				17,000.78
580 Travel				1,559.72
Total Other Purchased Services				\$143,446.25
600 Supplies				
610 General Supplies				11,697.12
640 Books and Periodicals				129.99
650 Supplies & Fees – Technology Related				52,476.44
Total Supplies				\$64,303.55
800 Other Objects				
810 Dues and Fees				6,332.39
890 Miscellaneous Expenditures				90.70
Total Other Objects				\$6,423.09
Total 2519 Other Fiscal Services				\$978,131.26

General Fund (10)

2540 Printing, Publishing and Duplicating Services

Elementary

Secondary

Federal

Total

100 Personnel Services – Salaries

100 Personnel Services – Salaries

73,210.41

Total Personnel Services – Salaries

\$73,210.41

200 Personnel Services – Employee Benefits

210 Group Insurance – Contracted Provider

649.16

220 Social Security Contributions

5,393.21

230 PSERS Retirement Contributions

24,474.18

260 Workers' Compensation

363.63

270 Group Insurance – Self-Insurance

24,226.97

Total Personnel Services – Employee Benefits

\$55,107.15

400 Purchased Property Services

440 Rentals

57,304.42

Total Purchased Property Services

\$57,304.42

600 Supplies

610 General Supplies

8,566.32

Total Supplies

\$8,566.32

Total 2540 Printing, Publishing and Duplicating Services

\$194,188.30

General Fund (10)

	<u>Elementary</u>	<u>Secondary</u>	<u>Federal</u>	<u>Total</u>
2600 Operation and Maintenance of Plant Services				
100 Personnel Services – Salaries				
100 Personnel Services – Salaries				3,040,259.55
Total Personnel Services – Salaries				\$3,040,259.55
200 Personnel Services – Employee Benefits				
210 Group Insurance – Contracted Provider				21,026.46
220 Social Security Contributions				227,185.92
230 PSERS Retirement Contributions				998,976.08
250 Unemployment Compensation				346.08
260 Workers' Compensation				14,845.26
270 Group Insurance – Self-Insurance				837,989.29
Total Personnel Services – Employee Benefits				\$2,100,369.09
300 Purchased Professional and Technical Services				
350 Security / Safety Services				52,252.43
Total Purchased Professional and Technical Services				\$52,252.43
400 Purchased Property Services				
410 Cleaning Services				61,760.62
420 Utility Services				141,345.53
430 Repairs and Maintenance Services				200,639.52
440 Rentals				4,091.25
Total Purchased Property Services				\$407,836.92
500 Other Purchased Services				
522 Automotive Liability Insurance				14,245.57
530 Communications				99,115.11
580 Travel				3,553.70
Total Other Purchased Services				\$116,914.38
600 Supplies				
610 General Supplies	177,826.93	207,250.75		385,077.68
620 Energy				1,056,754.77
650 Supplies & Fees – Technology Related				15,285.25
Total Supplies	\$177,826.93	\$207,250.75		\$1,457,117.70
700 Property				
752 Capital Equipment – Original and Additional				9,646.78
762 Capitalized Equipment - Replacement				1,247.00
Total Property				\$10,893.78
800 Other Objects				
810 Dues and Fees				1,735.00
Total Other Objects				\$1,735.00
Total 2600 Operation and Maintenance of Plant Services	\$177,826.93	\$207,250.75		\$7,187,378.85

General Fund (10)

	<u>Elementary</u>	<u>Secondary</u>	<u>Federal</u>	<u>Total</u>
2610 Supervision of Operation and Maintenance of Plant Services				
100 Personnel Services – Salaries				
100 Personnel Services – Salaries				223,600.58
Total Personnel Services – Salaries				\$223,600.58
200 Personnel Services – Employee Benefits				
210 Group Insurance – Contracted Provider				1,636.98
220 Social Security Contributions				16,842.19
230 PSERS Retirement Contributions				64,638.40
260 Workers' Compensation				1,105.39
270 Group Insurance – Self-Insurance				45,210.78
Total Personnel Services – Employee Benefits				\$129,433.74
400 Purchased Property Services				
430 Repairs and Maintenance Services				153.53
440 Rentals				683.65
Total Purchased Property Services				\$837.18
500 Other Purchased Services				
530 Communications				184.87
580 Travel				43.06
Total Other Purchased Services				\$227.93
600 Supplies				
610 General Supplies	432.56	390.74		823.30
650 Supplies & Fees – Technology Related				10,102.50
Total Supplies	\$432.56	\$390.74		\$10,925.80
800 Other Objects				
810 Dues and Fees				20.00
Total Other Objects				\$20.00
Total 2610 Supervision of Operation and Maintenance of Plant Services	\$432.56	\$390.74		\$365,045.23

General Fund (10)

	<u>Elementary</u>	<u>Secondary</u>	<u>Federal</u>	<u>Total</u>
2619 Supervision of Operation and Maintenance of Plant Services – All Other Supervision				
100 Personnel Services – Salaries				
100 Personnel Services – Salaries				223,600.58
Total Personnel Services – Salaries				\$223,600.58
200 Personnel Services – Employee Benefits				
210 Group Insurance – Contracted Provider				1,636.98
220 Social Security Contributions				16,842.19
230 PSERS Retirement Contributions				64,638.40
260 Workers' Compensation				1,105.39
270 Group Insurance – Self-Insurance				45,210.78
Total Personnel Services – Employee Benefits				\$129,433.74
400 Purchased Property Services				
430 Repairs and Maintenance Services				153.53
440 Rentals				683.65
Total Purchased Property Services				\$837.18
500 Other Purchased Services				
530 Communications				184.87
580 Travel				43.06
Total Other Purchased Services				\$227.93
600 Supplies				
610 General Supplies	432.56	390.74		823.30
650 Supplies & Fees – Technology Related				10,102.50
Total Supplies	\$432.56	\$390.74		\$10,925.80
800 Other Objects				
810 Dues and Fees				20.00
Total Other Objects				\$20.00
Total 2619 Supervision of Operation and Maintenance of Plant Services – All Other Supervision	\$432.56	\$390.74		\$365,045.23

General Fund (10)

	<u>Elementary</u>	<u>Secondary</u>	<u>Federal</u>	<u>Total</u>
2620 Operation of Buildings Services				
100 Personnel Services – Salaries				
100 Personnel Services – Salaries				2,493,822.83
Total Personnel Services – Salaries				\$2,493,822.83
200 Personnel Services – Employee Benefits				
210 Group Insurance – Contracted Provider				17,072.19
220 Social Security Contributions				186,198.28
230 PSERS Retirement Contributions				826,413.51
250 Unemployment Compensation				346.08
260 Workers' Compensation				12,151.51
270 Group Insurance – Self-Insurance				722,844.30
Total Personnel Services – Employee Benefits				\$1,765,025.87
400 Purchased Property Services				
410 Cleaning Services				61,760.62
420 Utility Services				141,345.53
430 Repairs and Maintenance Services				186,216.97
440 Rentals				2,133.00
Total Purchased Property Services				\$391,456.12
500 Other Purchased Services				
530 Communications				61,969.28
580 Travel				3,362.76
Total Other Purchased Services				\$65,332.04
600 Supplies				
610 General Supplies	160,252.04	176,363.29		336,615.33
620 Energy				1,029,619.51
Total Supplies	\$160,252.04	\$176,363.29		\$1,366,234.84
700 Property				
752 Capital Equipment – Original and Additional				9,646.78
762 Capitalized Equipment - Replacement				1,247.00
Total Property				\$10,893.78
800 Other Objects				
810 Dues and Fees				1,685.00
Total Other Objects				\$1,685.00
Total 2620 Operation of Buildings Services	\$160,252.04	\$176,363.29		\$6,094,450.48

General Fund (10)

2630 Care and Upkeep of Grounds Services

<u>Elementary</u>	<u>Secondary</u>	<u>Federal</u>	<u>Total</u>
-------------------	------------------	----------------	--------------

100 Personnel Services – Salaries

100 Personnel Services – Salaries			207,749.11
-----------------------------------	--	--	------------

Total Personnel Services – Salaries			\$207,749.11
--	--	--	---------------------

200 Personnel Services – Employee Benefits

210 Group Insurance – Contracted Provider			1,367.10
---	--	--	----------

220 Social Security Contributions			15,614.95
-----------------------------------	--	--	-----------

230 PSERS Retirement Contributions			69,450.56
------------------------------------	--	--	-----------

260 Workers' Compensation			1,015.92
---------------------------	--	--	----------

270 Group Insurance – Self-Insurance			44,330.77
--------------------------------------	--	--	-----------

Total Personnel Services – Employee Benefits			\$131,779.30
---	--	--	---------------------

400 Purchased Property Services

430 Repairs and Maintenance Services			8,526.13
--------------------------------------	--	--	----------

440 Rentals			1,274.60
-------------	--	--	----------

Total Purchased Property Services			\$9,800.73
--	--	--	-------------------

500 Other Purchased Services

580 Travel			106.02
------------	--	--	--------

Total Other Purchased Services			\$106.02
---------------------------------------	--	--	-----------------

600 Supplies

610 General Supplies	13,211.14	26,385.57	39,596.71
----------------------	-----------	-----------	-----------

Total Supplies	\$13,211.14	\$26,385.57	\$39,596.71
-----------------------	--------------------	--------------------	--------------------

Total 2630 Care and Upkeep of Grounds Services	\$13,211.14	\$26,385.57	\$389,031.87
---	--------------------	--------------------	---------------------

General Fund (10)

	<u>Elementary</u>	<u>Secondary</u>	<u>Federal</u>	<u>Total</u>
2650 Vehicle Operation and Maintenance Services (Other Than Student Transportation Vehicles)				
400 <u>Purchased Property Services</u>				
430 Repairs and Maintenance Services				5,717.89
Total Purchased Property Services				\$5,717.89
500 <u>Other Purchased Services</u>				
522 Automotive Liability Insurance				14,245.57
Total Other Purchased Services				\$14,245.57
600 <u>Supplies</u>				
610 General Supplies	3,675.04	3,319.70		6,994.74
620 Energy				27,135.26
Total Supplies	\$3,675.04	\$3,319.70		\$34,130.00
800 <u>Other Objects</u>				
810 Dues and Fees				30.00
Total Other Objects				\$30.00
Total 2650 Vehicle Operation and Maintenance Services (Other Than Student Transportation Vehicles)	\$3,675.04	\$3,319.70		\$54,123.46

General Fund (10)

	<u>Elementary</u>	<u>Secondary</u>	<u>Federal</u>	<u>Total</u>
2660 Safety and Security Services				
100 Personnel Services – Salaries				
100 Personnel Services – Salaries				115,087.03
Total Personnel Services – Salaries				\$115,087.03
200 Personnel Services – Employee Benefits				
210 Group Insurance – Contracted Provider				950.19
220 Social Security Contributions				8,530.50
230 PSERS Retirement Contributions				38,473.61
260 Workers' Compensation				572.44
270 Group Insurance – Self-Insurance				25,603.44
Total Personnel Services – Employee Benefits				\$74,130.18
300 Purchased Professional and Technical Services				
350 Security / Safety Services				52,252.43
Total Purchased Professional and Technical Services				\$52,252.43
400 Purchased Property Services				
430 Repairs and Maintenance Services				25.00
Total Purchased Property Services				\$25.00
500 Other Purchased Services				
530 Communications				36,960.96
580 Travel				41.86
Total Other Purchased Services				\$37,002.82
600 Supplies				
610 General Supplies	256.15	791.45		1,047.60
650 Supplies & Fees – Technology Related				5,182.75
Total Supplies	\$256.15	\$791.45		\$6,230.35
Total 2660 Safety and Security Services	\$256.15	\$791.45		\$284,727.81

General Fund (10)

	<u>Elementary</u>	<u>Secondary</u>	<u>Federal</u>	<u>Total</u>
2700 Student Transportation Services				
100 Personnel Services – Salaries				
100 Personnel Services – Salaries				114,040.35
Total Personnel Services – Salaries				\$114,040.35
200 Personnel Services – Employee Benefits				
210 Group Insurance – Contracted Provider				1,349.52
220 Social Security Contributions				8,659.30
230 PSERS Retirement Contributions				37,634.54
260 Workers' Compensation				564.11
270 Group Insurance – Self-Insurance				21,257.75
Total Personnel Services – Employee Benefits				\$69,465.22
400 Purchased Property Services				
430 Repairs and Maintenance Services				9,336.06
440 Rentals				683.63
Total Purchased Property Services				\$10,019.69
500 Other Purchased Services				
513 Contracted Carriers			93,094.22	5,777,523.41
516 Student Transportation Services From the IU				8,345.73
522 Automotive Liability Insurance				6,159.93
530 Communications				371.47
580 Travel				97.50
Total Other Purchased Services			\$93,094.22	\$5,792,498.04
600 Supplies				
610 General Supplies				406.27
620 Energy				78.97
650 Supplies & Fees – Technology Related				32,599.25
Total Supplies				\$33,084.49
800 Other Objects				
810 Dues and Fees				219.00
Total Other Objects				\$219.00
Total 2700 Student Transportation Services			\$93,094.22	\$6,019,326.79

General Fund (10)

	<u>Elementary</u>	<u>Secondary</u>	<u>Federal</u>	<u>Total</u>
2710 Supervision of Student Transportation Services				
100 Personnel Services – Salaries				
100 Personnel Services – Salaries				114,040.35
Total Personnel Services – Salaries				\$114,040.35
200 Personnel Services – Employee Benefits				
210 Group Insurance – Contracted Provider				1,349.52
220 Social Security Contributions				8,659.30
230 PSERS Retirement Contributions				37,634.54
260 Workers' Compensation				564.11
270 Group Insurance – Self-Insurance				21,257.75
Total Personnel Services – Employee Benefits				\$69,465.22
400 Purchased Property Services				
440 Rentals				683.63
Total Purchased Property Services				\$683.63
500 Other Purchased Services				
513 Contracted Carriers			93,094.22	133,018.59
530 Communications				371.47
580 Travel				97.50
Total Other Purchased Services			\$93,094.22	\$133,487.56
600 Supplies				
610 General Supplies				406.27
650 Supplies & Fees – Technology Related				32,599.25
Total Supplies				\$33,005.52
800 Other Objects				
810 Dues and Fees				219.00
Total Other Objects				\$219.00
Total 2710 Supervision of Student Transportation Services			\$93,094.22	\$350,901.28

General Fund (10)

2719 Supervision of Student Transportation Services – All Other Supervision

	<u>Elementary</u>	<u>Secondary</u>	<u>Federal</u>	<u>Total</u>
100 Personnel Services – Salaries				
100 Personnel Services – Salaries				114,040.35
Total Personnel Services – Salaries				\$114,040.35
200 Personnel Services – Employee Benefits				
210 Group Insurance – Contracted Provider				1,349.52
220 Social Security Contributions				8,659.30
230 PSERS Retirement Contributions				37,634.54
260 Workers' Compensation				564.11
270 Group Insurance – Self-Insurance				21,257.75
Total Personnel Services – Employee Benefits				\$69,465.22
400 Purchased Property Services				
440 Rentals				683.63
Total Purchased Property Services				\$683.63
500 Other Purchased Services				
513 Contracted Carriers			93,094.22	133,018.59
530 Communications				371.47
580 Travel				97.50
Total Other Purchased Services			\$93,094.22	\$133,487.56
600 Supplies				
610 General Supplies				406.27
650 Supplies & Fees – Technology Related				32,599.25
Total Supplies				\$33,005.52
800 Other Objects				
810 Dues and Fees				219.00
Total Other Objects				\$219.00
Total 2719 Supervision of Student Transportation Services – All Other Supervision			\$93,094.22	\$350,901.28

General Fund (10)

2720 Vehicle Operation Services

Elementary

Secondary

Federal

Total

400 Purchased Property Services

430 Repairs and Maintenance Services

2,050.04

Total Purchased Property Services

\$2,050.04

500 Other Purchased Services

513 Contracted Carriers

3,531,853.39

516 Student Transportation Services From the IU

8,345.73

522 Automotive Liability Insurance

6,159.93

Total Other Purchased Services

\$3,546,359.05

600 Supplies

620 Energy

78.97

Total Supplies

\$78.97

Total 2720 Vehicle Operation Services

\$3,548,488.06

General Fund (10)

2740 Vehicle Servicing and Maintenance Services

Elementary

Secondary

Federal

Total

400 Purchased Property Services

430 Repairs and Maintenance Services

7,286.02

Total Purchased Property Services

\$7,286.02

Total 2740 Vehicle Servicing and Maintenance Services

\$7,286.02

LEA : 114060753 Boyertown Area SD

Printed 1/3/2020 3:34:13 PM

General Fund (10)

	<u>Elementary</u>	<u>Secondary</u>	<u>Federal</u>	<u>Total</u>
2750 Nonpublic Transportation				
500 <u>Other Purchased Services</u>				
513 Contracted Carriers				2,112,651.43
Total Other Purchased Services				\$2,112,651.43
Total 2750 Nonpublic Transportation				\$2,112,651.43

General Fund (10)

	<u>Elementary</u>	<u>Secondary</u>	<u>Federal</u>	<u>Total</u>
2800 Support Services – Central				
100 Personnel Services – Salaries				
100 Personnel Services – Salaries			1,241.91	945,833.97
Total Personnel Services – Salaries			\$1,241.91	\$945,833.97
200 Personnel Services – Employee Benefits				
210 Group Insurance – Contracted Provider				6,319.75
220 Social Security Contributions			90.12	69,779.21
230 PSERS Retirement Contributions			207.57	310,620.30
250 Unemployment Compensation				2,990.04
260 Workers' Compensation			6.24	4,617.94
270 Group Insurance – Self-Insurance				215,031.81
299 All Other Employee Benefits				20,746.00
Total Personnel Services – Employee Benefits			\$303.93	\$630,105.05
300 Purchased Professional and Technical Services				
322 Professional Educational Services – lus			20.28	20.28
329 Professional Educational Services – Other				3,949.00
330 Other Professional Services				52,902.71
Total Purchased Professional and Technical Services			\$20.28	\$56,871.99
400 Purchased Property Services				
430 Repairs and Maintenance Services				760.73
440 Rentals				2,678.40
Total Purchased Property Services				\$3,439.13
500 Other Purchased Services				
530 Communications			95.66	288,410.97
549 Other Advertising/Public Relations				604.40
580 Travel				8,458.20
Total Other Purchased Services			\$95.66	\$297,473.57
600 Supplies				
610 General Supplies				11,764.88
640 Books and Periodicals				756.53
650 Supplies & Fees – Technology Related				894,414.96
Total Supplies				\$906,936.37
700 Property				
752 Capital Equipment – Original and Additional				17,814.30
Total Property				\$17,814.30
800 Other Objects				
810 Dues and Fees				254.00
Total Other Objects				\$254.00
Total 2800 Support Services – Central			\$1,661.78	\$2,858,728.38

General Fund (10)

2830 Staff Services

Elementary

Secondary

Federal

Total

100 Personnel Services – Salaries

100 Personnel Services – Salaries

304,646.40

Total Personnel Services – Salaries

\$304,646.40

200 Personnel Services – Employee Benefits

210 Group Insurance – Contracted Provider

1,900.48

220 Social Security Contributions

23,329.50

230 PSERS Retirement Contributions

100,590.02

250 Unemployment Compensation

2,990.04

260 Workers' Compensation

1,494.94

270 Group Insurance – Self-Insurance

43,073.28

299 All Other Employee Benefits

20,746.00

Total Personnel Services – Employee Benefits

\$194,124.26

300 Purchased Professional and Technical Services

329 Professional Educational Services – Other

3,949.00

330 Other Professional Services

51,951.56

Total Purchased Professional and Technical Services

\$55,900.56

400 Purchased Property Services

440 Rentals

1,528.38

Total Purchased Property Services

\$1,528.38

500 Other Purchased Services

530 Communications

882.94

549 Other Advertising/Public Relations

604.40

580 Travel

4,784.74

Total Other Purchased Services

\$6,272.08

600 Supplies

610 General Supplies

3,269.80

640 Books and Periodicals

756.53

650 Supplies & Fees – Technology Related

40,116.11

Total Supplies

\$44,142.44

800 Other Objects

810 Dues and Fees

254.00

Total Other Objects

\$254.00

Total 2830 Staff Services

\$606,868.12

General Fund (10)

2831 Supervision of Staff Services

Elementary

Secondary

Federal

Total

100 Personnel Services – Salaries

100 Personnel Services – Salaries

33,125.00

Total Personnel Services – Salaries

\$33,125.00

200 Personnel Services – Employee Benefits

210 Group Insurance – Contracted Provider

266.40

220 Social Security Contributions

2,591.06

230 PSERS Retirement Contributions

10,864.88

260 Workers' Compensation

163.22

270 Group Insurance – Self-Insurance

3,598.28

299 All Other Employee Benefits

18,308.50

Total Personnel Services – Employee Benefits

\$35,792.34

800 Other Objects

810 Dues and Fees

189.00

Total Other Objects

\$189.00

Total 2831 Supervision of Staff Services

\$69,106.34

General Fund (10)

	<u>Elementary</u>	<u>Secondary</u>	<u>Federal</u>	<u>Total</u>
2834 Staff Development Services – Non-Instructional, Certified Staff Only				
300 <u>Purchased Professional and Technical Services</u>				
329 Professional Educational Services – Other				3,949.00
Total Purchased Professional and Technical Services				\$3,949.00
500 <u>Other Purchased Services</u>				
580 Travel				4,526.10
Total Other Purchased Services				\$4,526.10
600 <u>Supplies</u>				
610 General Supplies				332.14
640 Books and Periodicals				756.53
Total Supplies				\$1,088.67
800 <u>Other Objects</u>				
810 Dues and Fees				65.00
Total Other Objects				\$65.00
Total 2834 Staff Development Services – Non-Instructional, Certified Staff Only				\$9,628.77

LEA : 114060753 Boyertown Area SD

Printed 1/3/2020 3:34:13 PM

Page - 49 of 53

General Fund (10)**2839 Other Staff Services**

	<u>Elementary</u>	<u>Secondary</u>	<u>Federal</u>	<u>Total</u>
100 Personnel Services – Salaries				
100 Personnel Services – Salaries				271,521.40
Total Personnel Services – Salaries				\$271,521.40
200 Personnel Services – Employee Benefits				
210 Group Insurance – Contracted Provider				1,634.08
220 Social Security Contributions				20,738.44
230 PSERS Retirement Contributions				89,725.14
250 Unemployment Compensation				2,990.04
260 Workers' Compensation				1,331.72
270 Group Insurance – Self-Insurance				39,475.00
299 All Other Employee Benefits				2,437.50
Total Personnel Services – Employee Benefits				\$158,331.92
300 Purchased Professional and Technical Services				
330 Other Professional Services				51,951.56
Total Purchased Professional and Technical Services				\$51,951.56
400 Purchased Property Services				
440 Rentals				1,528.38
Total Purchased Property Services				\$1,528.38
500 Other Purchased Services				
530 Communications				882.94
549 Other Advertising/Public Relations				604.40
580 Travel				258.64
Total Other Purchased Services				\$1,745.98
600 Supplies				
610 General Supplies				2,937.66
650 Supplies & Fees – Technology Related				40,116.11
Total Supplies				\$43,053.77
Total 2839 Other Staff Services				\$528,133.01

General Fund (10)

	<u>Elementary</u>	<u>Secondary</u>	<u>Federal</u>	<u>Total</u>
2840 Data Processing Services				
100 Personnel Services – Salaries				
100 Personnel Services – Salaries				639,945.66
Total Personnel Services – Salaries				\$639,945.66
200 Personnel Services – Employee Benefits				
210 Group Insurance – Contracted Provider				4,419.27
220 Social Security Contributions				46,359.59
230 PSERS Retirement Contributions				209,822.71
260 Workers' Compensation				3,116.76
270 Group Insurance – Self-Insurance				171,958.53
Total Personnel Services – Employee Benefits				\$435,676.86
300 Purchased Professional and Technical Services				
330 Other Professional Services				951.15
Total Purchased Professional and Technical Services				\$951.15
400 Purchased Property Services				
430 Repairs and Maintenance Services				760.73
440 Rentals				1,150.02
Total Purchased Property Services				\$1,910.75
500 Other Purchased Services				
530 Communications				287,432.37
580 Travel				3,673.46
Total Other Purchased Services				\$291,105.83
600 Supplies				
610 General Supplies				8,495.08
650 Supplies & Fees – Technology Related				854,298.85
Total Supplies				\$862,793.93
700 Property				
752 Capital Equipment – Original and Additional				17,814.30
Total Property				\$17,814.30
Total 2840 Data Processing Services				\$2,250,198.48

General Fund (10)

	<u>Elementary</u>	<u>Secondary</u>	<u>Federal</u>	<u>Total</u>
2850 State and Federal Agency Liaison Services				
100 Personnel Services – Salaries				
100 Personnel Services – Salaries			1,241.91	1,241.91
Total Personnel Services – Salaries			\$1,241.91	\$1,241.91
200 Personnel Services – Employee Benefits				
220 Social Security Contributions			90.12	90.12
230 PSERS Retirement Contributions			207.57	207.57
260 Workers' Compensation			6.24	6.24
Total Personnel Services – Employee Benefits			\$303.93	\$303.93
300 Purchased Professional and Technical Services				
322 Professional Educational Services – Ius			20.28	20.28
Total Purchased Professional and Technical Services			\$20.28	\$20.28
500 Other Purchased Services				
530 Communications			95.66	95.66
Total Other Purchased Services			\$95.66	\$95.66
Total 2850 State and Federal Agency Liaison Services			\$1,661.78	\$1,661.78

General Fund (10)

2900 Other Support Services

Elementary

Secondary

Federal

Total

500 Other Purchased Services

595 IU Payments By Withholding

100,359.21

Total Other Purchased Services

\$100,359.21

Total 2900 Other Support Services

\$100,359.21

General Fund (10)

2910 Support Services Not Listed Elsewhere In the 2000 Series

Elementary

Secondary

Federal

Total

500 Other Purchased Services

595 IU Payments By Withholding

100,359.21

Total Other Purchased Services

\$100,359.21

Total 2910 Support Services Not Listed Elsewhere In the 2000 Series

\$100,359.21

General Fund (10)

3000 Operation of Non-Instructional Services	<u>Total</u>
100 Personnel Services – Salaries	
100 Personnel Services – Salaries	807,448.53
Total Personnel Services – Salaries	\$807,448.53
200 Personnel Services – Employee Benefits	
210 Group Insurance – Contracted Provider	1,535.92
220 Social Security Contributions	60,937.77
230 PSERS Retirement Contributions	255,262.85
250 Unemployment Compensation	695.68
260 Workers' Compensation	3,989.01
270 Group Insurance – Self-Insurance	62,551.62
Total Personnel Services – Employee Benefits	\$384,972.85
300 Purchased Professional and Technical Services	
330 Other Professional Services	76,297.85
350 Security / Safety Services	24,644.77
Total Purchased Professional and Technical Services	\$100,942.62
400 Purchased Property Services	
410 Cleaning Services	4,436.81
430 Repairs and Maintenance Services	37,118.76
440 Rentals	1,249.14
Total Purchased Property Services	\$42,804.71
500 Other Purchased Services	
510 Student Transportation Services	61,644.57
520 Insurance – General	11,043.00
580 Travel	6,005.85
Total Other Purchased Services	\$78,693.42
600 Supplies	
610 General Supplies	127,620.71
Total Supplies	\$127,620.71
700 Property	
752 Capital Equipment – Original and Additional	1,774.99
762 Capitalized Equipment - Replacement	15,727.88
Total Property	\$17,502.87
800 Other Objects	
810 Dues and Fees	27,419.05
Total Other Objects	\$27,419.05
Total 3000 Operation of Non-Instructional Services	\$1,587,404.76

General Fund (10)

	<u>Elementary</u>	<u>Secondary</u>	<u>Federal</u>	<u>Total</u>
3200 Student Activities				
100 Personnel Services – Salaries				
100 Personnel Services – Salaries				786,146.31
Total Personnel Services – Salaries				\$786,146.31
200 Personnel Services – Employee Benefits				
210 Group Insurance – Contracted Provider				1,535.92
220 Social Security Contributions				59,469.54
230 PSERS Retirement Contributions				253,252.14
250 Unemployment Compensation				695.68
260 Workers' Compensation				3,946.35
270 Group Insurance – Self-Insurance				62,551.62
Total Personnel Services – Employee Benefits				\$381,451.25
300 Purchased Professional and Technical Services				
330 Other Professional Services				76,232.85
350 Security / Safety Services				17,274.70
Total Purchased Professional and Technical Services				\$93,507.55
400 Purchased Property Services				
410 Cleaning Services				4,436.81
430 Repairs and Maintenance Services				37,118.76
440 Rentals				1,249.14
Total Purchased Property Services				\$42,804.71
500 Other Purchased Services				
510 Student Transportation Services				61,644.57
520 Insurance – General				11,043.00
580 Travel				5,354.03
Total Other Purchased Services				\$78,041.60
600 Supplies				
610 General Supplies				123,922.56
Total Supplies				\$123,922.56
700 Property				
752 Capital Equipment – Original and Additional				1,774.99
762 Capitalized Equipment - Replacement				15,727.88
Total Property				\$17,502.87
800 Other Objects				
810 Dues and Fees				27,419.05
Total Other Objects				\$27,419.05
Total 3200 Student Activities				\$1,550,795.90

General Fund (10)

	<u>Elementary</u>	<u>Secondary</u>	<u>Federal</u>	<u>Total</u>
3300 Community Services				
100 Personnel Services – Salaries				
100 Personnel Services – Salaries			798.20	21,302.22
Total Personnel Services – Salaries			\$798.20	\$21,302.22
200 Personnel Services – Employee Benefits				
220 Social Security Contributions			60.03	1,468.23
230 PSERS Retirement Contributions			127.54	2,010.71
260 Workers’ Compensation			3.99	42.66
Total Personnel Services – Employee Benefits			\$191.56	\$3,521.60
300 Purchased Professional and Technical Services				
330 Other Professional Services				65.00
350 Security / Safety Services				7,370.07
Total Purchased Professional and Technical Services				\$7,435.07
500 Other Purchased Services				
580 Travel				651.82
Total Other Purchased Services				\$651.82
600 Supplies				
610 General Supplies			3,662.13	3,698.15
Total Supplies			\$3,662.13	\$3,698.15
Total 3300 Community Services			\$4,651.89	\$36,608.86

LEA : 114060753 Boyertown Area SD

Printed 1/3/2020 3:34:40 PM

General Fund (10)

5000 Other Expenditures and Financing Uses

Total

800 Other Objects

830 Interest 3,716,233.52

880 Refunds of Prior Years' Receipts 17,745.02

Total Other Objects \$3,733,978.54

900 Other Uses of Funds

910 Redemption of Principal 2,400,000.00

939 Other Fund Transfers 1,940,000.00

Total Other Uses of Funds \$4,340,000.00

Total 5000 Other Expenditures and Financing Uses \$8,073,978.54

LEA : 114060753 Boyertown Area SD

Printed 1/3/2020 3:34:40 PM

General Fund (10)

5100 Debt Service / Other Expenditures and Financing Uses	<u>Elementary</u>	<u>Secondary</u>	<u>Federal</u>	<u>Total</u>
800 Other Objects				
830 Interest				3,716,233.52
880 Refunds of Prior Years' Receipts				17,745.02
Total Other Objects				\$3,733,978.54
900 Other Uses of Funds				
910 Redemption of Principal				2,400,000.00
Total Other Uses of Funds				\$2,400,000.00
Total 5100 Debt Service / Other Expenditures and Financing Uses				\$6,133,978.54

LEA : 114060753 Boyertown Area SD

Printed 1/3/2020 3:34:40 PM

General Fund (10)

	<u>Elementary</u>	<u>Secondary</u>	<u>Federal</u>	<u>Total</u>
5110 Debt Service				
800 Other Objects				
830 Interest				3,716,233.52
Total Other Objects				\$3,716,233.52
900 Other Uses of Funds				
910 Redemption of Principal				2,400,000.00
Total Other Uses of Funds				\$2,400,000.00
Total 5110 Debt Service				\$6,116,233.52

LEA : 114060753 Boyertown Area SD

Printed 1/3/2020 3:34:40 PM

General Fund (10)

5130 Refund of Prior Year Revenues / Receipts

Elementary

Secondary

Federal

Total

800 Other Objects

880 Refunds of Prior Years' Receipts

17,745.02

Total Other Objects

\$17,745.02

Total 5130 Refund of Prior Year Revenues / Receipts

\$17,745.02

LEA : 114060753 Boyertown Area SD

Printed 1/3/2020 3:34:40 PM

General Fund (10)

	<u>Elementary</u>	<u>Secondary</u>	<u>Federal</u>	<u>Total</u>
5200 Interfund Transfers – Out				
900 <u>Other Uses of Funds</u>				
939 Other Fund Transfers				1,940,000.00
Total Other Uses of Funds				\$1,940,000.00
Total 5200 Interfund Transfers – Out				\$1,940,000.00

LEA : 114060753 Boyertown Area SD

Printed 1/3/2020 3:34:40 PM

General Fund (10)

5230 Capital Projects Fund Transfers

Elementary

Secondary

Federal

Total

900 Other Uses of Funds

939 Other Fund Transfers

1,940,000.00

Total Other Uses of Funds

\$1,940,000.00

Total 5230 Capital Projects Fund Transfers

\$1,940,000.00

LEA : 114060753 Boyertown Area SD

Printed 1/3/2020 3:34:05 PM

Other Capital Projects Fund (39)

1000 Instruction	<u>Total</u>
400 <u>Purchased Property Services</u>	
440 Rentals	1,639,637.56
Total Purchased Property Services	\$1,639,637.56
700 <u>Property</u>	
756 Capitalized Technology Equipment – Original	408,093.00
Total Property	\$408,093.00
Total 1000 Instruction	\$2,047,730.56

LEA : 114060753 Boyertown Area SD

Printed 1/3/2020 3:34:05 PM

Other Capital Projects Fund (39)

1100 Regular Programs – Elementary / Secondary

400 Purchased Property Services

440 Rentals

Total Purchased Property Services

700 Property

756 Capitalized Technology Equipment– Original

Total Property

Total 1100 Regular Programs – Elementary / Secondary

	<u>Elementary</u>	<u>Secondary</u>	<u>Federal</u>	<u>Total</u>
440 Rentals	812,532.40	827,105.16		1,639,637.56
Total Purchased Property Services	\$812,532.40	\$827,105.16		\$1,639,637.56
756 Capitalized Technology Equipment– Original	214,412.00	193,681.00		408,093.00
Total Property	\$214,412.00	\$193,681.00		\$408,093.00
Total 1100 Regular Programs – Elementary / Secondary	\$1,026,944.40	\$1,020,786.16		\$2,047,730.56

LEA : 114060753 Boyertown Area SD

Printed 1/3/2020 3:34:05 PM

Other Capital Projects Fund (39)

1110 Regular Programs

400 Purchased Property Services

	<u>Elementary</u>	<u>Secondary</u>	<u>Federal</u>	<u>Total</u>
440 Rentals	812,532.40	827,105.16		1,639,637.56
Total Purchased Property Services	\$812,532.40	\$827,105.16		\$1,639,637.56

700 Property

756 Capitalized Technology Equipment– Original	214,412.00	193,681.00		408,093.00
Total Property	\$214,412.00	\$193,681.00		\$408,093.00
Total 1110 Regular Programs	\$1,026,944.40	\$1,020,786.16		\$2,047,730.56

Other Capital Projects Fund (39)

2000 Support Services

Total

300 Purchased Professional and Technical Services

350 Security / Safety Services 35,267.10

Total Purchased Professional and Technical Services \$35,267.10

400 Purchased Property Services

430 Repairs and Maintenance Services 1,150.00

Total Purchased Property Services \$1,150.00

600 Supplies

610 General Supplies 3,991.89

650 Supplies & Fees – Technology Related 2,069.71

Total Supplies \$6,061.60

700 Property

752 Capital Equipment – Original and Additional 119,351.80

758 Capitalized Technology Software - Original 282,821.30

Total Property \$402,173.10

800 Other Objects

810 Dues and Fees 89,352.44

Total Other Objects \$89,352.44

Total 2000 Support Services \$534,004.24

LEA : 114060753 Boyertown Area SD

Printed 1/3/2020 3:34:19 PM

Other Capital Projects Fund (39)

2300 Support Services – Administration

Elementary

Secondary

Federal

Total

800 Other Objects

810 Dues and Fees

87,303.97

Total Other Objects

\$87,303.97

Total 2300 Support Services – Administration

\$87,303.97

LEA : 114060753 Boyertown Area SD

Printed 1/3/2020 3:34:19 PM

Other Capital Projects Fund (39)

2390 Other Administration Services

Elementary

Secondary

Federal

Total

800 Other Objects

810 Dues and Fees

87,303.97

Total Other Objects

\$87,303.97

Total 2390 Other Administration Services

\$87,303.97

LEA : 114060753 Boyertown Area SD

Printed 1/3/2020 3:34:19 PM

Other Capital Projects Fund (39)

2500 Support Services – Business

Elementary

Secondary

Federal

Total

800 Other Objects

810 Dues and Fees

2,048.47

Total Other Objects

\$2,048.47

Total 2500 Support Services – Business

\$2,048.47

LEA : 114060753 Boyertown Area SD

Printed 1/3/2020 3:34:19 PM

Other Capital Projects Fund (39)

2510 Fiscal Services

Elementary

Secondary

Federal

Total

800 Other Objects

810 Dues and Fees

2,048.47

Total Other Objects

\$2,048.47

Total 2510 Fiscal Services

\$2,048.47

LEA : 114060753 Boyertown Area SD

Printed 1/3/2020 3:34:19 PM

Other Capital Projects Fund (39)

2519 Other Fiscal Services

Elementary

Secondary

Federal

Total

800 Other Objects

810 Dues and Fees

2,048.47

Total Other Objects

\$2,048.47

Total 2519 Other Fiscal Services

\$2,048.47

Other Capital Projects Fund (39)

2600 Operation and Maintenance of Plant Services

Elementary

Secondary

Federal

Total

300 Purchased Professional and Technical Services

350 Security / Safety Services

35,267.10

Total Purchased Professional and Technical Services

\$35,267.10

600 Supplies

610 General Supplies

2,097.34

1,894.55

3,991.89

Total Supplies

\$2,097.34

\$1,894.55

\$3,991.89

700 Property

752 Capital Equipment – Original and Additional

119,351.80

Total Property

\$119,351.80

Total 2600 Operation and Maintenance of Plant Services

\$2,097.34

\$1,894.55

\$158,610.79

Other Capital Projects Fund (39)

2660 Safety and Security Services

300 Purchased Professional and Technical Services

350 Security / Safety Services

Total Purchased Professional and Technical Services

600 Supplies

610 General Supplies

Total Supplies

700 Property

752 Capital Equipment – Original and Additional

Total Property

Total 2660 Safety and Security Services

Elementary

Secondary

Federal

Total

35,267.10

\$35,267.10

3,991.89

\$3,991.89

119,351.80

\$119,351.80

2,097.34

\$2,097.34

1,894.55

\$1,894.55

\$2,097.34

\$1,894.55

\$158,610.79

LEA : 114060753 Boyertown Area SD

Printed 1/3/2020 3:34:19 PM

Other Capital Projects Fund (39)

2800 Support Services – Central

Elementary

Secondary

Federal

Total

400 Purchased Property Services

430 Repairs and Maintenance Services

1,150.00

Total Purchased Property Services

\$1,150.00

600 Supplies

650 Supplies & Fees – Technology Related

2,069.71

Total Supplies

\$2,069.71

700 Property

758 Capitalized Technology Software - Original

282,821.30

Total Property

\$282,821.30

Total 2800 Support Services – Central

\$286,041.01

LEA : 114060753 Boyertown Area SD

Printed 1/3/2020 3:34:19 PM

Other Capital Projects Fund (39)

2840 Data Processing Services

Elementary

Secondary

Federal

Total

400 Purchased Property Services

430 Repairs and Maintenance Services

1,150.00

Total Purchased Property Services

\$1,150.00

600 Supplies

650 Supplies & Fees – Technology Related

2,069.71

Total Supplies

\$2,069.71

700 Property

758 Capitalized Technology Software - Original

282,821.30

Total Property

\$282,821.30

Total 2840 Data Processing Services

\$286,041.01

LEA : 114060753 Boyertown Area SD

Printed 1/3/2020 3:34:29 PM

Other Capital Projects Fund (39)

3000 Operation of Non-Instructional Services

Total

400 Purchased Property Services

440 Rentals 29,980.00

Total Purchased Property Services \$29,980.00

600 Supplies

610 General Supplies 8,000.00

Total Supplies \$8,000.00

700 Property

752 Capital Equipment – Original and Additional 74,510.09

Total Property \$74,510.09

Total 3000 Operation of Non-Instructional Services \$112,490.09

LEA : 114060753 Boyertown Area SD

Printed 1/3/2020 3:34:29 PM

Other Capital Projects Fund (39)

3200 Student Activities

Elementary

Secondary

Federal

Total

400 Purchased Property Services

440 Rentals

29,980.00

Total Purchased Property Services

\$29,980.00

600 Supplies

610 General Supplies

8,000.00

Total Supplies

\$8,000.00

700 Property

752 Capital Equipment – Original and Additional

74,510.09

Total Property

\$74,510.09

Total 3200 Student Activities

\$112,490.09

Other Capital Projects Fund (39)

4000 Facilities Acquisition, Construction and Improvement Services

Total

300 Purchased Professional and Technical Services

330 Other Professional Services 691,674.81

Total Purchased Professional and Technical Services \$691,674.81

400 Purchased Property Services

410 Cleaning Services 475.80

430 Repairs and Maintenance Services 148,207.54

440 Rentals 7,209.00

450 Construction Services 2,989,195.25

Total Purchased Property Services \$3,145,087.59

500 Other Purchased Services

520 Insurance – General 6,000.00

549 Other Advertising/Public Relations 990.00

Total Other Purchased Services \$6,990.00

600 Supplies

610 General Supplies 83,695.22

Total Supplies \$83,695.22

700 Property

752 Capital Equipment – Original and Additional 300,175.10

762 Capitalized Equipment - Replacement 3,324.00

Total Property \$303,499.10

Total 4000 Facilities Acquisition, Construction and Improvement Services \$4,230,946.72

Other Capital Projects Fund (39)

4600 Existing Building Improvement Services

Elementary

Secondary

Federal

Total

300 Purchased Professional and Technical Services

330 Other Professional Services 691,674.81

Total Purchased Professional and Technical Services \$691,674.81

400 Purchased Property Services

410 Cleaning Services 475.80

430 Repairs and Maintenance Services 148,207.54

440 Rentals 7,209.00

450 Construction Services 2,989,195.25

Total Purchased Property Services \$3,145,087.59

500 Other Purchased Services

520 Insurance – General 6,000.00

549 Other Advertising/Public Relations 990.00

Total Other Purchased Services \$6,990.00

600 Supplies

610 General Supplies 83,695.22

Total Supplies \$83,695.22

700 Property

752 Capital Equipment – Original and Additional 300,175.10

762 Capitalized Equipment - Replacement 3,324.00

Total Property \$303,499.10

Total 4600 Existing Building Improvement Services \$4,230,946.72

LEA : 114060753 Boyertown Area SD

Printed 1/3/2020 3:34:42 PM

Other Capital Projects Fund (39)

5000 Other Expenditures and Financing Uses

Total

900 Other Uses of Funds

939 Other Fund Transfers

49,688.02

Total Other Uses of Funds

\$49,688.02

Total 5000 Other Expenditures and Financing Uses

\$49,688.02

LEA : 114060753 Boyertown Area SD

Printed 1/3/2020 3:34:42 PM

Other Capital Projects Fund (39)

5200 Interfund Transfers – Out

Elementary

Secondary

Federal

Total

900 Other Uses of Funds

939 Other Fund Transfers

49,688.02

Total Other Uses of Funds

\$49,688.02

Total 5200 Interfund Transfers – Out

\$49,688.02

LEA : 114060753 Boyertown Area SD

Printed 1/3/2020 3:34:42 PM

Other Capital Projects Fund (39)

5250 Enterprise Fund Transfers

Elementary

Secondary

Federal

Total

900 Other Uses of Funds

939 Other Fund Transfers

49,688.02

Total Other Uses of Funds

\$49,688.02

Total 5250 Enterprise Fund Transfers

\$49,688.02

LEA : 114060753 Boyertown Area SD

Printed 1/3/2020 3:34:43 PM

Debt Service Fund (40)

5000 Other Expenditures and Financing Uses

Total

900 Other Uses of Funds

939 Other Fund Transfers

5,806.00

Total Other Uses of Funds

\$5,806.00

Total 5000 Other Expenditures and Financing Uses

\$5,806.00

LEA : 114060753 Boyertown Area SD

Printed 1/3/2020 3:34:43 PM

Debt Service Fund (40)

5200 Interfund Transfers – Out

Elementary

Secondary

Federal

Total

900 Other Uses of Funds

939 Other Fund Transfers

5,806.00

Total Other Uses of Funds

\$5,806.00

Total 5200 Interfund Transfers – Out

\$5,806.00

LEA : 114060753 Boyertown Area SD

Printed 1/3/2020 3:34:43 PM

Debt Service Fund (40)

5210 General Fund Transfers

Elementary

Secondary

Federal

Total

900 Other Uses of Funds

939 Other Fund Transfers

5,806.00

Total Other Uses of Funds

\$5,806.00

Total 5210 General Fund Transfers

\$5,806.00

	<u>General Fund(10)</u>	<u>Public Purpose Trust(27)</u>	<u>Other Compt Approved (28)</u>	<u>Athletic / Activity(29)</u>	<u>Capital Reserve (690. 1850)(31)</u>
1000 Instruction					
1100 Regular Programs - Elementary / Secondary	51,013,418.87				
1200 Special Programs - Elementary / Secondary	20,737,465.72				
1300 Vocational Education	2,318,730.63				
1400 Other Instructional Programs - Elementary / Secondary	339,170.74				
1500 Nonpublic School Programs	896.94				
1600 Adult Education Programs	198.00				
1800 Pre-Kindergarten	225,338.17				
Total Instruction	\$74,635,219.07				
2000 Support Services					
2100 Support Services - Students	3,492,655.15				
2200 Support Services - Instructional Staff	4,971,017.78				
2300 Support Services - Administration	6,064,888.32				
2400 Support Services - Pupil Health	1,191,926.44				
2500 Support Services - Business	1,250,634.52				
2600 Operation and Maintenance of Plant Services	7,187,378.85				
2700 Student Transportation Services	6,019,326.79				
2800 Support Services - Central	2,858,728.38				
2900 Other Support Services	100,359.21				
Total Support Services	\$33,136,915.44				
3000 Operation of Non-Instructional Services					
3200 Student Activities	1,550,795.90				
3300 Community Services	36,608.86				
Total Operation of Non-Instructional Services	\$1,587,404.76				
4000 Facilities Acquisition, Construction and Improvement Services					
4600 Existing Building Improvement Services					
Total Facilities Acquisition, Construction and Improvement Services					
5000 Other Expenditures and Financing Uses					
5100 Debt Service / Other Expenditures and Financing Uses	6,133,978.54				
5200 Interfund Transfers - Out	1,940,000.00				
Total Other Expenditures and Financing Uses	\$8,073,978.54				
TOTAL ACTUAL EXPENDITURES & OTHER FINANCING USES	\$117,433,517.81				

	<u>Capital Reserve (1431)(32)</u>	<u>Other Capital Projects Fund(39)</u>	<u>Debt Service(40)</u>	<u>Permanent(90)</u>	<u>Total</u>
1000 Instruction					
1100 Regular Programs - Elementary / Secondary		2,047,730.56			53,061,149.43
1200 Special Programs - Elementary / Secondary					20,737,465.72
1300 Vocational Education					2,318,730.63
1400 Other Instructional Programs - Elementary / Secondary					339,170.74
1500 Nonpublic School Programs					896.94
1600 Adult Education Programs					198.00
1800 Pre-Kindergarten					225,338.17
Total Instruction		\$2,047,730.56			\$76,682,949.63
2000 Support Services					
2100 Support Services - Students					3,492,655.15
2200 Support Services - Instructional Staff					4,971,017.78
2300 Support Services - Administration		87,303.97			6,152,192.29
2400 Support Services - Pupil Health					1,191,926.44
2500 Support Services - Business		2,048.47			1,252,682.99
2600 Operation and Maintenance of Plant Services		158,610.79			7,345,989.64
2700 Student Transportation Services					6,019,326.79
2800 Support Services - Central		286,041.01			3,144,769.39
2900 Other Support Services					100,359.21
Total Support Services		\$534,004.24			\$33,670,919.68
3000 Operation of Non-Instructional Services					
3200 Student Activities		112,490.09			1,663,285.99
3300 Community Services					36,608.86
Total Operation of Non-Instructional Services		\$112,490.09			\$1,699,894.85
4000 Facilities Acquisition, Construction and Improvement Services					
4600 Existing Building Improvement Services		4,230,946.72			4,230,946.72
Total Facilities Acquisition, Construction and Improvement Services		\$4,230,946.72			\$4,230,946.72
5000 Other Expenditures and Financing Uses					
5100 Debt Service / Other Expenditures and Financing Uses					6,133,978.54
5200 Interfund Transfers - Out		49,688.02	5,806.00		1,995,494.02
Total Other Expenditures and Financing Uses		\$49,688.02	\$5,806.00		\$8,129,472.56
TOTAL ACTUAL EXPENDITURES & OTHER FINANCING USES		\$6,974,859.63	\$5,806.00		\$124,414,183.44

LEA : 114060753 Boyertown Area SD

Printed 1/3/2020 3:35:07 PM

PSERS Salary Data (Salary Data should relate to the General Fund only)

Amount Description	Amount
Total Salary Base for salaries subject to PSERS withholding	53,399,259.92
Total Federally Funded salaries subject to PSERS withholding	1,278,538.14
	<hr/>

Title I Expenditure Data

Amount Description	Amount
Expenditures Funded with Current Title I Funds	567,523.89
Expenditures Funded with Carry over Title I Funds	102,885.41
	<hr/>
Total Title I Expenditure Data	\$670,409.30
	<hr/>

Benefits for Staff Relative to Collective Bargaining Agreements

	OBJECT	COVERED	NOT COVERED	TOTAL
10 General Fund				
	211 Medical Insurance			
	212 Dental Insurance			
	215 Eye Care Insurance	51,838.52	15,731.56	67,570.08
	216 Prescription Insurance			
	271 Self-Insurance Medical Benefits	6,883,936.63	1,996,646.91	8,880,583.54
	272 Self-Insurance Dental Benefits	469,578.95	132,420.01	601,998.96
	275 Self-Insurance Eye Care Benefits			
	276 Self-Insurance Prescription Benefits			
	FUND TOTAL	\$7,405,354.10	\$2,144,798.48	\$9,550,152.58
50 Enterprise Fund				
	211 Medical Insurance			
	212 Dental Insurance			
	215 Eye Care Insurance		673.41	673.41
	216 Prescription Insurance			
	271 Self-Insurance Medical Benefits		57,925.45	57,925.45
	272 Self-Insurance Dental Benefits		4,957.97	4,957.97
	275 Self-Insurance Eye Care Benefits			
	276 Self-Insurance Prescription Benefits			
	FUND TOTAL		\$63,556.83	\$63,556.83
60 Internal Service Fund	No Self Insurance data to report			
	211 Medical Insurance			
	212 Dental Insurance			
	215 Eye Care Insurance			
	216 Prescription Insurance			
	271 Self-Insurance Medical Benefits			
	272 Self-Insurance Dental Benefits			
	275 Self-Insurance Eye Care Benefits			
	276 Self-Insurance Prescription Benefits			
	FUND TOTAL			
Total of All Funds		\$7,405,354.10	\$2,208,355.31	\$9,613,709.41

LEA : 114060753 Boyertown Area SD

Printed 1/3/2020 3:35:12 PM

Function	Special Education (Prior Year)	Nonspecial Education (Prior Year)	Total (Prior Year)	Special Education (Current Year)	Nonspecial Education (Current Year)	Total (Current Year)
2120 Guidance Services	545,983.44	1,694,408.17	2,240,391.61	502,853.99	1,793,282.95	2,296,136.94
2140 Psychological Services	663,964.14		663,964.14	691,813.49		691,813.49
2150 Speech Pathology and Audiology Services						
2160 Social Work Services						
2260 Instruction and Curriculum Development Services	1,296,822.08	662,869.03	1,959,691.11	1,217,881.41	649,442.65	1,867,324.06
2350 Legal and Accounting Services	180,808.21	234,079.22	414,887.43	86,843.00	156,080.62	242,923.62
2420 Medical Services						
2440 Nursing Services	383,977.90	784,244.94	1,168,222.84	393,246.35	798,680.09	1,191,926.44
2700 Student Transportation Services	2,016,811.55	3,765,696.83	5,782,508.38	1,390,939.15	4,628,387.64	6,019,326.79
Total	\$5,088,367.32	\$7,141,298.19	\$12,229,665.51	\$4,283,577.39	\$8,025,873.95	\$12,309,451.34

(PRINCIPAL AMOUNTS ONLY)

GOVERNMENTAL FUNDS/ ACTIVITIES

	Short-Term Borrowing	General Obligation Bonds/Notes	Authority Building Obligations	Other Long-Term Debt	Other Post-Employment Benefits (OPEB)	Compensated Absences	Net Pension Liability	Total
1. Debt at Beginning of Fiscal Year		89,635,000.00			23,889,724.00	183,655.00	189,835,089.00	303,543,468.00
2. Additional Debt Incurred During Year		5,500,000.00			248,836.00	57,207.00		5,806,043.00
3. Retirements and Repayments		2,400,000.00					5,694,965.00	8,094,965.00
4. Debt at End of Fiscal Year		92,735,000.00			24,138,560.00	240,862.00	184,140,124.00	301,254,546.00
5. Accreted Interest at End Of Fiscal Year								
6. Total Debt and Accreted Interest		92,735,000.00			24,138,560.00	240,862.00	184,140,124.00	301,254,546.00
7. Current Portion P&I - Due within 1 year		6,382,838.76						6,382,838.76
8. Interest Paid during current fiscal year		3,716,233.74						3,716,233.74

(PRINCIPAL AMOUNTS ONLY)

PROPRIETARY FUNDS

	Short-Term Borrowing	General Obligation Bonds/Notes	Authority Building Obligations	Other Long-Term Debt	Other Post-Employment Benefits (OPEB)	Compensated Absences	Net Pension Liability	Total
1. Debt at Beginning of Fiscal Year					304,434.00		3,767,911.00	4,072,345.00
2. Additional Debt Incurred During Year					3,850.00			3,850.00
3. Retirements and Repayments							113,035.00	113,035.00
4. Debt at End of Fiscal Year					308,284.00		3,654,876.00	3,963,160.00
5. Accreted Interest at End Of Fiscal Year								
6. Total Debt and Accreted Interest					308,284.00		3,654,876.00	3,963,160.00
7. Current Portion P&I - Due within 1 year								
8. Interest Paid during current fiscal year								

Total Principal and Interest Payments Made by Your School - All Funds

Function	Fund		Principal (910)	Principal (920)	Interest (830)	Total (Principal +Interest)	Misc Other Uses (990)
5110	10	General Fund	2,400,000.00		3,716,233.52	6,116,233.52	
5110	20	Special Revenue Funds					
5110	30	Capital Projects Funds					
5110	40	Debt Service Fund					
5110	90	Permanent Fund					
5120	10	General Fund					
5120	20	Special Revenue Funds					
5120	30	Capital Projects Funds					
5120	40	Debt Service Fund					

Total Debt Payments - Governmental Funds			\$2,400,000.00		\$3,716,233.52	\$6,116,233.52	
---	--	--	-----------------------	--	-----------------------	-----------------------	--

Function	Fund		Principal (910)	Principal (920)	Interest (830)	Total (Principal +Interest)
5110	50	Enterprise Fund				
5110	60	Internal Service Fund				
5120	50	Enterprise Fund				
5120	60	Internal Service Fund				

Total Debt Payments - Proprietary Funds						
--	--	--	--	--	--	--

LEA : 114060753 Boyertown Area SD

Printed 1/3/2020 3:35:16 PM

Debt Details
Governmental Funds/ Activities

Debt Category	Debt Issue Date (MM/YYYY)	Principal Amounts Only			Debt at End of Fiscal Year	Current Portion Due Within One Year (Principal and Interest)	Interest Paid During Fiscal Year
		Debt at Beginning of Fiscal Year	Additions	Reductions / Repayments			
General Obligation Bonds/Notes – CIB	12/2019	29,985,000.00		5,000.00	29,980,000.00	1,417,856.26	1,412,921.26
General Obligation Bonds/Notes – CIB	03/2019		5,500,000.00		5,500,000.00	197,780.00	
General Obligation Bonds/Notes – CIB	05/2018	18,735,000.00		875,000.00	17,860,000.00	1,567,735.00	629,170.00
General Obligation Bonds/Notes – CIB	12/2015	29,760,000.00		240,000.00	29,520,000.00	1,656,550.00	1,416,400.00
General Obligation Bonds/Notes – CIB	11/2013	4,280,000.00		485,000.00	3,795,000.00	598,412.50	108,162.48
General Obligation Bonds/Notes – CIB	06/2012	6,875,000.00		795,000.00	6,080,000.00	944,505.00	149,580.00
Compensated Absences		183,655.00	57,207.00		240,862.00		
Other Post-Employment Benefits (OPEB)		23,889,724.00	248,836.00		24,138,560.00		
Net Pension Liability		189,835,089.00		5,694,965.00	184,140,124.00		
Totals for Debt Entered:		\$303,543,468.00	\$5,806,043.00	\$8,094,965.00	\$301,254,546.00	\$6,382,838.76	\$3,716,233.74

Bond Details
Proprietary Funds

Debt Category	Debt Issue Date (MM/YYYY)	Principal Amounts Only			Debt at End of Fiscal Year	Current Portion Due Within One Year (Principal and Interest)	Interest Paid During Fiscal Year
		Debt at Beginning of Fiscal Year	Additions	Reductions / Repayments			
Other Post-Employment Benefits (OPEB)		304,434.00	3,850.00		308,284.00		
Net Pension Liability		3,767,911.00		113,035.00	3,654,876.00		
Totals for Debt Entered:		\$4,072,345.00	\$3,850.00	\$113,035.00	\$3,963,160.00		

General Fund (10)

Section 1: Tuition/Purchased Services as Reported within Expenditure Detail

	Amount
Tuition Reported in General Fund Expenditures 1000-560	8,089,260.14
Purchased Services in General Fund Expenditures 1000-594 and 1000-597	1,179.57
Section 1 Total	\$8,090,439.71

Section 2: Tuition Paid to Institution Types During Fiscal Year

	Tuition Paid For Nonspecial Education	Tuition Paid For Special Education	Total
1 1306 Institutions			
2 Institutionalized Children's Programs			
3 Juveniles Incarcerated in Adult Facilities			
4 Residential Treatment Facilities			
5 Other Local Education Agencies	123,900.56	28,019.11	151,919.67
6 Brick and Mortar Charter Schools	259,036.40		259,036.40
7 Cyber Charter Schools	1,667,040.60	626,899.02	2,293,939.62
8 Career and Technology Centers	2,179,059.00	139,671.63	2,318,730.63
9 Approved Private Schools		652,223.68	652,223.68
10 PA Chartered Schools for the Deaf and Blind			
11 Private Residential Rehabilitative Institutions	13,380.78	161,051.80	174,432.58
12 Juvenile Detention Centers			
13 Special Program Jointures			
14 Other Tuition Not Included Elsewhere In This Section	89,218.70	2,150,938.43	2,240,157.13
Section 2 Total	\$4,331,636.04	\$3,758,803.67	\$8,090,439.71

LEA : 114060753 Boyertown Area SD

Printed 1/3/2020 3:35:33 PM

Food Service / Cafeteria Operations Fund (51)

3000 Operation of Non-Instructional Services

Total

100 Personnel Services – Salaries

100 Personnel Services – Salaries 948,360.00

Total Personnel Services – Salaries \$948,360.00

200 Personnel Services – Employee Benefits

210 Group Insurance – Contracted Provider 2,764.00

220 Social Security Contributions 71,501.00

230 PSERS Retirement Contributions 291,405.00

250 Unemployment Compensation 282.00

260 Workers' Compensation 4,741.00

270 Group Insurance – Self-Insurance 63,894.00

299 All Other Employee Benefits 89,437.00

Total Personnel Services – Employee Benefits \$524,024.00

300 Purchased Professional and Technical Services

330 Other Professional Services 18,960.00

Total Purchased Professional and Technical Services \$18,960.00

400 Purchased Property Services

430 Repairs and Maintenance Services 20,070.00

Total Purchased Property Services \$20,070.00

500 Other Purchased Services

580 Travel 3,148.00

Total Other Purchased Services \$3,148.00

600 Supplies

610 General Supplies 84,674.00

630 Food 1,277,204.00

650 Supplies & Fees – Technology Related 14,482.00

Total Supplies \$1,376,360.00

700 Property

740 Depreciation 12,933.00

Total Property \$12,933.00

800 Other Objects

890 Miscellaneous Expenditures 112.00

Total Other Objects \$112.00

Total 3000 Operation of Non-Instructional Services \$2,903,967.00

Food Service / Cafeteria Operations Fund (51)

	<u>Elementary</u>	<u>Secondary</u>	<u>Federal</u>	<u>Total</u>
3100 Food Services				
100 Personnel Services – Salaries				
100 Personnel Services – Salaries				948,360.00
Total Personnel Services – Salaries				\$948,360.00
200 Personnel Services – Employee Benefits				
210 Group Insurance – Contracted Provider				2,764.00
220 Social Security Contributions				71,501.00
230 PSERS Retirement Contributions				291,405.00
250 Unemployment Compensation				282.00
260 Workers' Compensation				4,741.00
270 Group Insurance – Self-Insurance				63,894.00
299 All Other Employee Benefits				89,437.00
Total Personnel Services – Employee Benefits				\$524,024.00
300 Purchased Professional and Technical Services				
330 Other Professional Services				18,960.00
Total Purchased Professional and Technical Services				\$18,960.00
400 Purchased Property Services				
430 Repairs and Maintenance Services				20,070.00
Total Purchased Property Services				\$20,070.00
500 Other Purchased Services				
580 Travel				3,148.00
Total Other Purchased Services				\$3,148.00
600 Supplies				
610 General Supplies				84,674.00
630 Food				1,277,204.00
650 Supplies & Fees – Technology Related				14,482.00
Total Supplies				\$1,376,360.00
700 Property				
740 Depreciation				12,933.00
Total Property				\$12,933.00
800 Other Objects				
890 Miscellaneous Expenditures				112.00
Total Other Objects				\$112.00
Total 3100 Food Services				\$2,903,967.00

Internal Service Fund (60)

2000 Support Services

Total

200 Personnel Services – Employee Benefits

270 Group Insurance – Self-Insurance 10,678,827.00

299 All Other Employee Benefits 3,236.00

Total Personnel Services – Employee Benefits \$10,682,063.00

300 Purchased Professional and Technical Services

330 Other Professional Services 69,987.00

Total Purchased Professional and Technical Services \$69,987.00

Total 2000 Support Services \$10,752,050.00

LEA : 114060753 Boyertown Area SD

Printed 1/3/2020 3:35:27 PM

Internal Service Fund (60)

2800 Support Services – Central

Elementary

Secondary

Federal

Total

200 Personnel Services – Employee Benefits

270 Group Insurance – Self-Insurance

10,678,827.00

299 All Other Employee Benefits

3,236.00

Total Personnel Services – Employee Benefits

\$10,682,063.00

300 Purchased Professional and Technical Services

330 Other Professional Services

69,987.00

Total Purchased Professional and Technical Services

\$69,987.00

Total 2800 Support Services – Central

\$10,752,050.00

Internal Service Fund (60)

2830 Staff Services

Elementary

Secondary

Federal

Total

200 Personnel Services – Employee Benefits

270 Group Insurance – Self-Insurance

10,678,827.00

299 All Other Employee Benefits

3,236.00

Total Personnel Services – Employee Benefits

\$10,682,063.00

300 Purchased Professional and Technical Services

330 Other Professional Services

69,987.00

Total Purchased Professional and Technical Services

\$69,987.00

Total 2830 Staff Services

\$10,752,050.00

LEA : 114060753 Boyertown Area SD

Printed 1/3/2020 3:35:27 PM

Internal Service Fund (60)

2835 Health Services

Elementary

Secondary

Federal

Total

200 Personnel Services – Employee Benefits

270 Group Insurance – Self-Insurance

10,678,827.00

299 All Other Employee Benefits

3,236.00

Total Personnel Services – Employee Benefits

\$10,682,063.00

300 Purchased Professional and Technical Services

330 Other Professional Services

69,987.00

Total Purchased Professional and Technical Services

\$69,987.00

Total 2835 Health Services

\$10,752,050.00

	<u>Food Service(51)</u>	<u>Child Care Operations(52)</u>	<u>Other Enterprise(58)</u>	<u>Internal Service(60)</u>	<u>Total</u>
2000 <u>Support Services</u>					
2800 Support Services - Central				10,752,050.00	10,752,050.00
Total Support Services				\$10,752,050.00	\$10,752,050.00
3000 <u>Operation of Non-Instructional Services</u>					
3100 Food Services	2,903,967.00				2,903,967.00
Total Operation of Non-Instructional Services	\$2,903,967.00				\$2,903,967.00
TOTAL ACTUAL EXPENDITURES & OTHER FINANCING USES	\$2,903,967.00			\$10,752,050.00	\$13,656,017.00

LEA : 114060753 Boyertown Area SD

Printed 1/3/2020 3:35:54 PM

Fund	School	School Number	Local Personnel	Local Nonpersonnel	State Personnel	State Nonpersonnel	Federal Personnel	Federal Nonpersonnel	Total	Explanation
10	Boyertown Area MS-East	6804	7,888,589.65	1,103,717.83	3,654,561.74	511,321.43	173,668.79	120,134.36	13,451,993.80	
	Boyertown Area MS-West	6305	7,576,116.83	927,467.77	3,509,801.86	429,669.73	140,381.91	94,086.74	12,677,524.84	
	Boyertown Area SHS	6306	17,200,506.40	2,758,584.73	7,968,510.86	1,277,974.72	340,270.96	219,079.30	29,764,926.97	
	Boyertown El Sch	6307	3,921,508.46	540,837.85	1,816,724.58	250,554.96	440,390.44	417,700.98	7,387,717.27	
	Colebrookdale El Sch	762	2,459,506.60	327,228.72	1,139,420.24	151,595.87	177,419.77	163,032.71	4,418,203.91	
	Earl El Sch	763	2,344,216.44	294,390.15	1,086,009.54	136,382.67	115,941.92	102,798.30	4,079,739.02	
	Gilbertsville El Sch	754	5,071,941.26	754,011.76	2,349,687.75	349,312.44	211,250.11	171,227.10	8,907,430.42	
	New Hanover-Upper Frederick El	755	5,067,514.12	747,534.49	2,347,636.77	346,311.71	150,795.02	111,595.12	8,771,387.23	
	Pine Forge El Sch	761	2,131,866.42	287,236.62	987,633.76	133,068.64	97,347.18	84,409.62	3,721,562.24	
	Washington El Sch	766	3,892,158.04	571,898.32	1,803,127.35	264,944.41	116,203.31	89,164.97	6,737,496.40	
Total			57,553,924.22	8,312,908.24	26,663,114.45	3,851,136.58	1,963,669.41	1,573,229.20	99,917,982.10	